



Rabbit anti Endostatin Polyclonal Antibody

Alternative Name(s): Collagen, Type XVIII, alpha1;

Order Information

- **Description:** Endostatin
- **Catalogue:** 500-5004
- **Lot:** See label
- **Size:** 100ug/200ul
- **Host:** Rabbit
- **Clone:** nan
- **Application:** IHC(P), WB
- **Reactivity:** Hu

ANTIGEN PREPARATION

A synthetic peptide corresponding to the internal segment of human Endostatin

BACKGROUND

Endostatin is a 20 kDa proteolytic fragment of the C-terminal, non-collagenous (NC1) domain of type XVIII Collagen. It was originally identified as a factor produced by murine hemangioendothelioma cells that could specifically inhibit endothelial cell proliferation and angiogenesis. Although the molecular signals that trigger the release of Endostatin from type XVIII Collagen are not well understood, multiple proteases have been suggested to be involved in its generation including Cathepsins S, B, L, and V, Elastase, and matrix metalloproteinases (MMPs)-2, -7, and -9. Endostatin is of particular interest as it has been shown to inhibit the growth of many primary and metastatic tumors. It may also be involved in down-regulating angiogenesis during physiological processes such as wound healing and the establishment of placental circulation. The anti-angiogenic activity of Endostatin is attributable to its ability to inhibit endothelial cell proliferation and suppress VEGF- and FGF basic-induced endothelial cell migration and adhesion. Many of these effects are thought to be mediated by interactions between Endostatin and endothelial cell-expressed Transglutaminase 2, Heparin, and Integrins alpha 5 beta 1 and alpha V beta 3.

PURIFICATION

The Rabbit IgG is purified by Epitope Affinity Purification

FORMULATION

This affinity purified antibody is supplied in sterile Phosphatebuffered saline (pH7.2) containing antibody stabilizer

SPECIFICITY

This antibody recognizes human Endostatin. The other species not tested.

STORAGE

The antibodies are stable for 24 months from date of receipt when stored at -20oC to -70oC. The antibodies can be stored at 2oC-8oC for three month without detectable loss of activity. Avoid repeated freezing-thawing cycles.

APPLICATIONS/SUGGESTED WORKING DILUTIONS*

- Western Blot: 0.1-1 µg/ml
- ELISA: 0.01-0.1 µg/ml
- Immunoprecipitation: 2-5 µg/ml
- IHC: 2-10 µg/ml
- Flow cytometry: Not tested
- Molecular Weight: 20.0
- Positive Control: Kidney Tissue
- Cellular Location: Cell Membrane

FOR RESEARCH USE ONLY.

AbboMax, Inc 2528 Qume Drive, Suite 8, San Jose, California 95131, USA
1 408-573-1898 (Tel). 1 408-573-1858 (Fax). www.abbomax.com info@abbomax.com



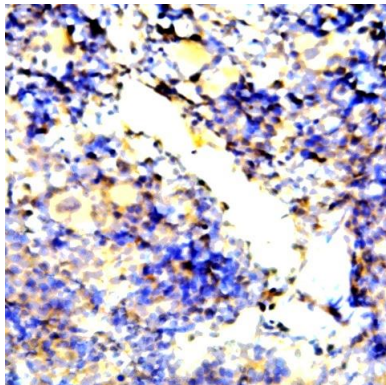
*Optimal dilutions should be determined by researchers for the specific applications.

FOR RESEARCH USE ONLY.

AbboMax, Inc 2528 Qume Drive, Suite 8, San Jose, California 95131, USA
1 408-573-1898 (Tel). 1 408-573-1858 (Fax). www.abbomax.com info@abbomax.com



DATA ATTACHMENTS



Immunohistochemistry: Human spleen carcinoma (FFPE) stained with Rabbit anti-Endostatin (Cat# 500-5004) at 1:200 for 10 min @ RT. Staining of formalin-fixed tissue requires boiling tissue sections in 10 mM Citrate Buffer, pH 6.0 for 10 min followed by cooling at RT for 20 min.

REFERENCES

FOR RESEARCH USE ONLY.

AbboMax, Inc 2528 Qume Drive, Suite 8, San Jose, California 95131, USA
1 408-573-1898 (Tel). 1 408-573-1858 (Fax). www.abbomax.com info@abbomax.com