



Rabbit anti c-Jun Polyclonal Antibody

Alternative Name(s): Transcription factor c-Jun; v-Jun sarcoma virus 17-oncogene; JUN; AP1; Jun-proto-oncogene

Order Information

- **Description:** c-Jun
- **Catalogue:** 500-4684
- **Lot:** See label
- **Size:** 100ug/200ul
- **Host:** Rabbit
- **Clone:** nan
- **Application:** WB
- **Reactivity:** Hu

ANTIGEN PREPARATION

A synthetic peptide corresponding to the N-terminus of human c-Jun protein. This sequence is identical within human, rat, mouse, bovine and dog.

BACKGROUND

c-Jun, also known as AP1, v-Jun or AH119, is a component of the transcription factor AP-1, which binds and activates transcription at TRE/AP-1 elements. The transcriptional activity of c-Jun is regulated by phosphorylation at Ser63 and Ser73 as well as Thr 91 and Thr93. Extracellular signals including growth factors, transforming oncoproteins and UV irradiation stimulate phosphorylation of c-Jun at Ser63/73 and activate c-Jun-dependent transcription. The MAP kinase homologue SAPK/JNK binds to the amino-terminal region of c-Jun and phosphorylates c-Jun at Ser63/73 and Thr91/93. The phosphorylation of Thr239 is catalysed by The inhibition of GSK3 is not required for the dephosphorylation of Thr239 in response to LPS, and nor is the phosphorylation of Thr91 and Thr93 required for the TPA- or EGF-induced dephosphorylation of Thr239 in fibroblasts. The agonist-induced dephosphorylation of Thr239 may involve a conformational change that exposes Thr239 to dephosphorylation and/or the activation of a Thr239 phosphatase.

PURIFICATION

The Rabbit IgG is purified by Epitope Affinity Purification

FORMULATION

This affinity purified antibody is supplied in sterile Phosphatebuffered saline (pH7.2) containing antibody stabilizer

SPECIFICITY

This antibody recognizes ~48 kDa of human c-Jun protein. This antibody also reacts with mouse and rat. The other species are not tested

STORAGE

The antibodies are stable for 24 months from date of receipt when stored at -20oC to -70oC. The antibodies can be stored at 2oC-8oC for three month without detectable loss of activity. Avoid repeated freezing-thawing cycles.

APPLICATIONS/SUGGESTED WORKING DILUTIONS*

- Western Blot: 0.1-1 µg/ml
- ELISA: 0.01-0.1 µg/ml
- Immunoprecipitation: 2-5 µg/ml
- IHC: 2-10 µg/ml
- Flow cytometry: Not tested
- Molecular Weight: 43.0
- Positive Control: Kidney Tissue

FOR RESEARCH USE ONLY.

AbboMax, Inc 2528 Qume Drive, Suite 8, San Jose, California 95131, USA
1 408-573-1898 (Tel). 1 408-573-1858 (Fax). www.abbomax.com info@abbomax.com



- Cellular Location: Cell Membrane

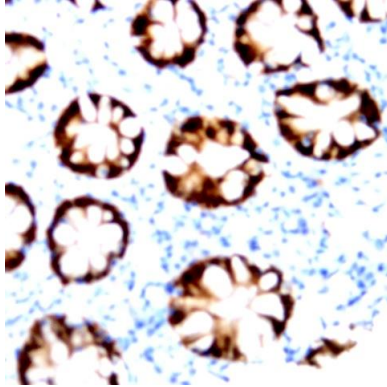
*Optimal dilutions should be determined by researchers for the specific applications.

FOR RESEARCH USE ONLY.

AbboMax, Inc 2528 Qume Drive, Suite 8, San Jose, California 95131, USA
1 408-573-1898 (Tel). 1 408-573-1858 (Fax). www.abbomax.com info@abbomax.com



DATA ATTACHMENTS



Immunohistochemistry: Kidney tissue (FFPE) stained with Rabbit anti-c-JUN (Cat# 500-4684) at 1:200 for 10 min @ RT. Staining of formalin-fixed tissue requires boiling tissue sections in 10 mM Citrate Buffer, pH 6.0 for 10 min followed by cooling at RT for 20 min.

REFERENCES

FOR RESEARCH USE ONLY.

AbboMax, Inc 2528 Qume Drive, Suite 8, San Jose, California 95131, USA
1 408-573-1898 (Tel). 1 408-573-1858 (Fax). www.abbomax.com info@abbomax.com