



Rabbit anti CD138 Polyclonal Antibody

Alternative Name(s): Syndecan 1; CD138; SYND1

Order Information

- **Description:** CD138
- **Catalogue:** 500-4564
- **Lot:** See label
- **Size:** 100ug/200ul
- **Host:** Rabbit
- **Clone:** nan
- **Application:** IHC(P)
- **Reactivity:** Hu

ANTIGEN PREPARATION

A synthetic peptide corresponding to the internal segment of human CD138

BACKGROUND

Syndecan 1 (CD138) is a transmembrane (type I) heparan sulfate proteoglycan. It belongs to the syndecan proteoglycan family. Cd138 is expressed on epithelial cells, normal and malignant plasma cells, endothelial cells, pre-B cells, and mesenchymal cells. CD138 is involved in the regulation of cell migration, cell-cell and cell-matrix interactions, growth-factor, chemokine and integrin activity, endocytosis, exosome formation, fibrosis, and implicated in inflammatory responses and tumorigenesis. Its structure allows it to bind with cytosolic, transmembrane, and extracellular matrix (ECM) proteins. It plays important roles in mediating key events during wound healing. Degradation of syndecan-1 HS by platelet heparanase creates HS fragments that markedly activate FGF-2 mitogenicity. Syndecan-1 deficiency promotes tumor growth in a murine model of colitis-induced colon carcinoma.

PURIFICATION

The Rabbit IgG is purified by Epitope Affinity Purification

FORMULATION

This affinity purified antibody is supplied in sterile Phosphatebuffered saline (pH7.2) containing antibody stabilizer

SPECIFICITY

This antibody recognizes human CD138. The other species not tested.

STORAGE

The antibodies are stable for 24 months from date of receipt when stored at -20°C to -70°C . The antibodies can be stored at 2°C - 8°C for three month without detectable loss of activity. Avoid repeated freezing-thawing cycles.

APPLICATIONS/SUGGESTED WORKING DILUTIONS*

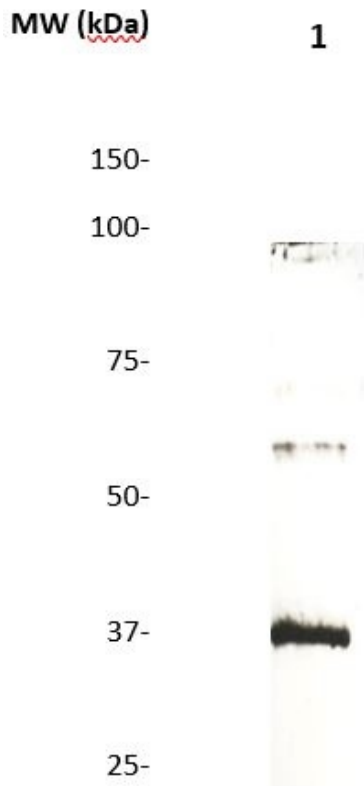
- Western Blot: 0.1-1 $\mu\text{g/ml}$
- ELISA: 0.01-0.1 $\mu\text{g/ml}$
- Immunoprecipitation: 2-5 $\mu\text{g/ml}$
- IHC: 2-10 $\mu\text{g/ml}$
- Flow cytometry: Not tested
- Molecular Weight: 32.5
- Positive Control: Kidney Tissue
- Cellular Location: Cell Membrane

*Optimal dilutions should be determined by researchers for the specific applications.

FOR RESEARCH USE ONLY.

AbboMax, Inc 2528 Qume Drive, Suite 8, San Jose, California 95131, USA
1 408-573-1898 (Tel). 1 408-573-1858 (Fax). www.abbomax.com info@abbomax.com

DATA ATTACHMENTS



Western Blot: The cell lysate derived from Caco-2 was immunoprobed by Rabbit anti-CD138 (Cat#500-4564) at 1:500. An immunoreactive band is observed around ~31 kDa. A weak band ~90 kDa is also observed due to protein glycosylation.

REFERENCES

FOR RESEARCH USE ONLY.