



## Rabbit anti GST Polyclonal Antibody

Alternative Name(s): Glutathione S-transferase

### Order Information

- **Description:** GST
- **Catalogue:** 500-4434
- **Lot:** See label
- **Size:** 100ug/200ul
- **Host:** Rabbit
- **Clone:** nan
- **Application:** WB
- **Reactivity:** nan

### **ANTIGEN PREPARATION**

A full length of GST recombinant protein.

### **BACKGROUND**

Many oligo peptides or tag proteins are widely used as a tag to monitor the protein expression, such as FLAG, c-Myc, E-tag, His-tag, GFP, GST, and etc. These tag antibodies provide tools to localize gene products in a variety of cell types to study the topology of proteins, and protein complexes, and to identify associated proteins. In addition, this antibody allows characterizing of newly identified, lowing abundance or poorly immunogenic proteins when protein specific antibodies are not available. This GST antibody can be used for pGEX expression vector for the synthesis of fusion proteins between GST and targeted protein expression in both plaques and western blots as well as for immunoaffinity purification of GST fusion proteins expressed in E. coli.

### **PURIFICATION**

The Rabbit IgG is purified by Epitope Affinity Purification

### **FORMULATION**

This affinity purified antibody is supplied in sterile Phosphatebuffered saline (pH7.2) containing antibody stabilizer

### **SPECIFICITY**

This antibody recognizes GST-fusion proteins.

### **STORAGE**

The antibodies are stable for 24 months from date of receipt when stored at -20oC to -70oC. The antibodies can be stored at 2oC-8oC for three month without detectable loss of activity. Avoid repeated freezing-thawing cycles.

### **APPLICATIONS/SUGGESTED WORKING DILUTIONS\***

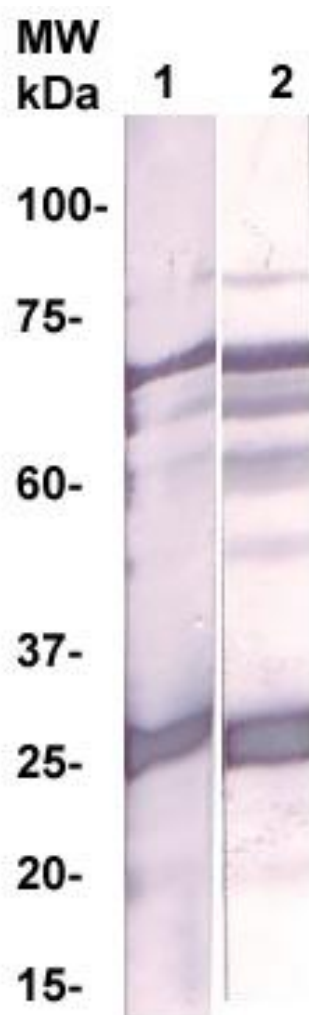
- Western Blot: 0.1-1 µg/ml
- ELISA: 0.01-0.1 µg/ml
- Immunoprecipitation: 2-5 µg/ml
- IHC: 2-10 µg/ml
- Flow cytometry: Not tested
- Molecular Weight: 27.0
- Positive Control: Kidney Tissue
- Cellular Location: Cell Membrane

\*Optimal dilutions should be determined by researchers for the specific applications.

### **FOR RESEARCH USE ONLY.**

AbboMax, Inc 2528 Qume Drive, Suite 8, San Jose, California 95131, USA  
1 408-573-1898 (Tel). 1 408-573-1858 (Fax). [www.abbomax.com](http://www.abbomax.com) [info@abbomax.com](mailto:info@abbomax.com)

## DATA ATTACHMENTS



Western Blot: GST-Recombinant protein were resolved onto 10% SDS-PAGE, transferred onto NC membrane, and immunoprobed by Lane 1: Rabbit anti GST (Lane 1: Cat# 500-4434); Lane 2: Mouse anti-GST (lane 2: Cat# 500-7634) at 1:500 dilution

## REFERENCES

### FOR RESEARCH USE ONLY.

AbboMax, Inc 2528 Qume Drive, Suite 8, San Jose, California 95131, USA  
1 408-573-1898 (Tel). 1 408-573-1858 (Fax). [www.abbomax.com](http://www.abbomax.com) [info@abbomax.com](mailto:info@abbomax.com)