



Rabbit anti MMP-10 Polyclonal Antibody

Alternative Name(s): MMP10, SL-2, STMY2

Order Information

- **Description:** MMP-10
- **Catalogue:** 500-3674
- **Lot:** See label
- **Size:** 100ug/200ul
- **Host:** Rabbit
- **Clone:** nan
- **Application:** IHC(P), WB
- **Reactivity:** Hu

ANTIGEN PREPARATION

A synthetic peptide corresponding to the C-term of MMP-10

BACKGROUND

Matrix metalloproteinases (MMPs) belong to a family of proteinases that target many extracellular matrix proteins including additional proteinases, growth factors, cell surface receptors and adhesion molecules. MMPs contain common domain structures that include a signal sequence, a propeptide, a catalytic domain, and a hemopexin-like (Hpx) domain

PURIFICATION

The Rabbit IgG is purified by Epitope Affinity Purification

FORMULATION

This affinity purified antibody is supplied in sterile Phosphatebuffered saline (pH7.2) containing antibody stabilizer

SPECIFICITY

This antibody recognizes human MMP-10 . The other species not tested.

STORAGE

The antibodies are stable for 24 months from date of receipt when stored at -20°C to -70°C . The antibodies can be stored at 2°C - 8°C for three month without detectable loss of activity. Avoid repeated freezing-thawing cycles.

APPLICATIONS/SUGGESTED WORKING DILUTIONS*

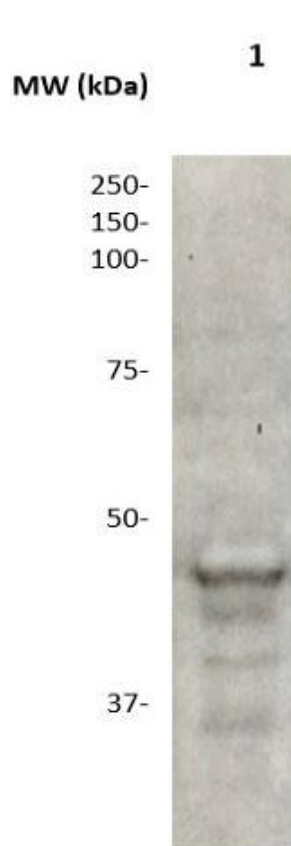
- Western Blot: 0.1-1 $\mu\text{g/ml}$
- ELISA: 0.01-0.1 $\mu\text{g/ml}$
- Immunoprecipitation: 2-5 $\mu\text{g/ml}$
- IHC: 2-10 $\mu\text{g/ml}$
- Flow cytometry: Not tested
- Molecular Weight: 45.4
- Positive Control: Kidney Tissue
- Cellular Location: Cell Membrane

*Optimal dilutions should be determined by researchers for the specific applications.

FOR RESEARCH USE ONLY.

AbboMax, Inc 2528 Qume Drive, Suite 8, San Jose, California 95131, USA
1 408-573-1898 (Tel). 1 408-573-1858 (Fax). www.abbomax.com info@abbomax.com

DATA ATTACHMENTS



Western Blot: The whole lysate derived from HeLa (20 ug/lane) immunoblotted by Rabbit anti – MMP 10 (Cat# 500-3674) at 1:500. Observed a major immunoreactive band at molecular weight ~46 kDa.

REFERENCES

FOR RESEARCH USE ONLY.