



## Rabbit anti MMP-2 Polyclonal Antibody

Alternative Name(s): Matrix metalloproteinase 2

### Order Information

- **Description:** MMP-2
- **Catalogue:** 500-3654
- **Lot:** See label
- **Size:** 100ug/200ul
- **Host:** Rabbit
- **Clone:** nan
- **Application:** IHC(P), WB
- **Reactivity:** Hu

### ANTIGEN PREPARATION

A synthetic peptide corresponding to C-term of human MMP2. This sequence is identical among human, rat, mouse, chicken, dog and bovine.

### BACKGROUND

Matrix metalloproteinases (MMPs) belong to a family of proteinases that target many extracellular matrix proteins including additional proteinases, growth factors, cell surface receptors and adhesion molecules. MMPs contain common domain structures that include a signal sequence, a propeptide, a catalytic domain, and a hemopexin-like (Hpx) domain. The MMP activity requires proteolytic cleavage of MMPs in order to generate active MMPs by release of the inhibitory propeptide domain from the whole molecules. MMP-2, MMP-3, MMP-7, MMP-9 and MMP-13 have been characterized as important factors for normal tissue remodeling during embryo development and wound healing, tumor invasion, angiogenesis, carcinogenesis and apoptosis. MMP activities are correlated with cancer metastatic process.

### PURIFICATION

The Rabbit IgG is purified by Epitope Affinity Purification

### FORMULATION

This affinity purified antibody is supplied in sterile Phosphatebuffered saline (pH7.2) containing antibody stabilizer

### SPECIFICITY

This antibody recognizes ~62 and 72 kDa of human MMP2 protein. This antibody reacts with human, rat, mouse. The other species are not tested.

### STORAGE

The antibodies are stable for 24 months from date of receipt when stored at -20oC to -70oC. The antibodies can be stored at 2oC-8oC for three month without detectable loss of activity. Avoid repeated freezing-thawing cycles.

### APPLICATIONS/SUGGESTED WORKING DILUTIONS\*

- Western Blot: 0.1-1 µg/ml
- ELISA: 0.01-0.1 µg/ml
- Immunoprecipitation: 2-5 µg/ml
- IHC: 2-10 µg/ml
- Flow cytometry: Not tested
- Molecular Weight: 72.0
- Positive Control: Kidney Tissue
- Cellular Location: Cell Membrane

\*Optimal dilutions should be determined by researchers for the specific applications.

### FOR RESEARCH USE ONLY.

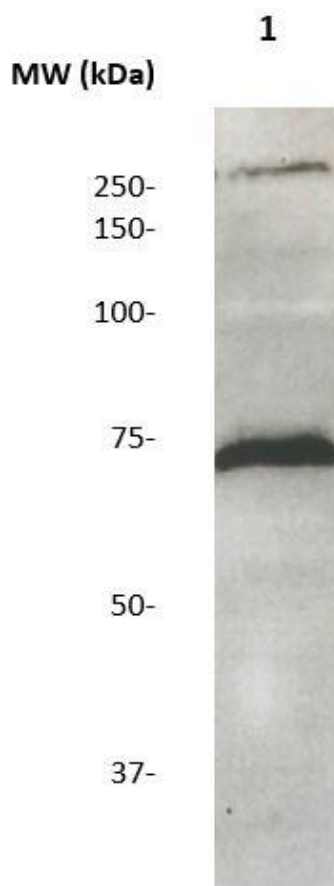
AbboMax, Inc 2528 Qume Drive, Suite 8, San Jose, California 95131, USA  
1 408-573-1898 (Tel). 1 408-573-1858 (Fax). [www.abbomax.com](http://www.abbomax.com) [info@abbomax.com](mailto:info@abbomax.com)



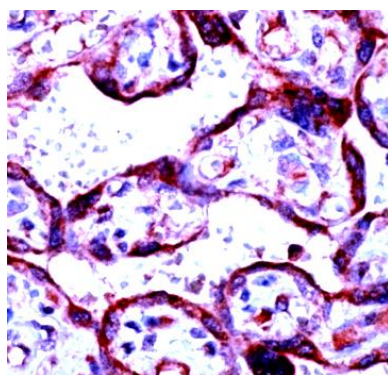
**FOR RESEARCH USE ONLY.**

AbboMax, Inc 2528 Qume Drive, Suite 8, San Jose, California 95131, USA  
1 408-573-1898 (Tel). 1 408-573-1858 (Fax). [www.abbomax.com](http://www.abbomax.com) [info@abbomax.com](mailto:info@abbomax.com)

## DATA ATTACHMENTS



Western Blot: : The protein derived from the LOVO whole cell lysate (lane 1) or the concentrated serum free culture medium of LOVO were resolved onto 10% SDS-PAGE, transferred to NC membrane, followed by an immunoblotting with Rabbit anti-MMP-2 (Cat#500-3654) at 1:1000. Observed a major immunoreactive band at molecular weight ~72 kDa.



Immunohistochemistry: Human placenta (FFPE) stained with Anti-MMP-2 antibody, (Cat# 500-3654) at 1:100 for 10 min @ RT. Staining of formalin-fixed tissue requires boiling tissue sections in 10 mM Citrate Buffer, pH 6.0 for 10 min followed by cooling at RT for 20 min.

## REFERENCES

### FOR RESEARCH USE ONLY.

AbboMax, Inc 2528 Qume Drive, Suite 8, San Jose, California 95131, USA  
1 408-573-1898 (Tel). 1 408-573-1858 (Fax). [www.abbomax.com](http://www.abbomax.com) [info@abbomax.com](mailto:info@abbomax.com)