



## Rabbit anti STAT5a Polyclonal Antibody

**Alternative Name(s):** Signal transducer and activator of transcription 5a (STAT5a)

### Order Information

- **Description:** STAT5a
- **Catalogue:** 500-3594
- **Lot:** See label
- **Size:** 100ug/200ul
- **Host:** Rabbit
- **Clone:** nan
- **Application:** IHC(P), WB
- **Reactivity:** Hu, Ms, Rt

### **ANTIGEN PREPARATION**

A synthetic peptide corresponding to the internal segment of human STAT5a

### **BACKGROUND**

STAT proteins (Signal transducer and activator of transcription) belong to a family of cytoplasmic transcription factors that can be phosphorylated by a ligand binding to its cell surface receptor. Activation of STAT5a induces dimerization, nuclear translocation and DNA binding. Stat5A is activated by IL-2, IL-7, IL-15, IL-3, GM-CSF, growth hormone, prolactin, erythropoietin and thrombopoietin; activation and dimerization of Stat5A requires phosphorylation of STATs.

### **PURIFICATION**

The Rabbit IgG is purified by Epitope Affinity Purification

### **FORMULATION**

This affinity purified antibody is supplied in sterile Phosphatebuffered saline (pH7.2) containing antibody stabilizer

### **SPECIFICITY**

This antibody recognizes STAT5a protein. It reacts with human, rat and mouse. Others not tested.

### **STORAGE**

The antibodies are stable for 24 months from date of receipt when stored at -20°C to -70°C. The antibodies can be stored at 2°C-8°C for three months without detectable loss of activity. Avoid repeated freezing-thawing cycles.

### **APPLICATIONS/SUGGESTED WORKING DILUTIONS\***

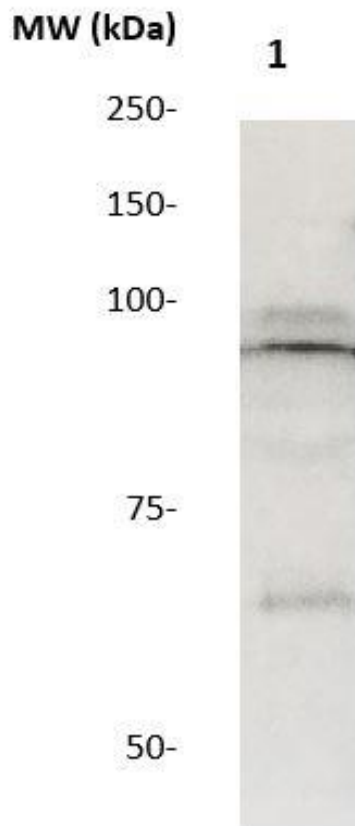
- Western Blot: 0.1-1 µg/ml
- ELISA: 0.01-0.1 µg/ml
- Immunoprecipitation: 2-5 µg/ml
- IHC: 2-10 µg/ml
- Flow cytometry: Not tested
- Molecular Weight: 92.0
- Positive Control: Kidney Tissue
- Cellular Location: Cell Membrane

\*Optimal dilutions should be determined by researchers for the specific applications.

### **FOR RESEARCH USE ONLY.**

AbboMax, Inc 2528 Qume Drive, Suite 8, San Jose, California 95131, USA  
1 408-573-1898 (Tel). 1 408-573-1858 (Fax). [www.abbomax.com](http://www.abbomax.com) [info@abbomax.com](mailto:info@abbomax.com)

## DATA ATTACHMENTS



Western Blot: The whole lysate derived from Hela (20 ug/lane) immunoblotted by Rabbit anti – STAT5a (Cat# 500-3594) at 1:500. Observed a major immunoreactive band at molecular weight ~92 kDa.

## REFERENCES

### FOR RESEARCH USE ONLY.

AbboMax, Inc 2528 Qume Drive, Suite 8, San Jose, California 95131, USA  
1 408-573-1898 (Tel). 1 408-573-1858 (Fax). [www.abbomax.com](http://www.abbomax.com) [info@abbomax.com](mailto:info@abbomax.com)