



## Mouse anti hGH Monoclonal Antibody

Alternative Name(s): Growth hormone; GH

### Order Information

- **Description:** hGH
- **Catalogue:** 500-3124
- **Lot:** See label
- **Size:** 100ug/200ul
- **Host:** Mouse
- **Clone:** ABM106
- **Application:** IHC(P), ELISA
- **Reactivity:** Hu

### **ANTIGEN PREPARATION**

A recombinant protein of human GH

### **BACKGROUND**

Pituitary growth hormone (GH), also designated somatotropin, plays a crucial role in stimulating and controlling the growth, metabolism and differentiation of many mammalian cell types by modulating the synthesis of multiple mRNA species. These effects are mediated by the binding of GH to its membrane-bound receptor, GHR, and involve a phosphorylation cascade that results in the modulation of numerous signaling pathways. GH is secreted in a pulsatile pattern which is tightly controlled by the interplay of GH-releasing hormone (GHRH) and somatostatin (SRIF). GHRH and SRIF are the primary hypothalamic factors that determine GH secretion from the somatotroph and regulate GH synthesis and secretory reserve. GH output is also highly sensitive to feedback control by GH itself, as well as by insulin-like growth factor I. GH is synthesized by acidophilic or somatotrophic cells of the anterior pituitary gland. Human growth hormone contains 191 amino acid residues with two disulfide bridges.

### **PURIFICATION**

The mouse IgG is purified by Protein A-Affinity Chromatography according to Isotyping

### **FORMULATION**

This affinity purified antibody is supplied in sterile Phosphatebuffered saline (pH7.2) containing antibody stabilizer

### **SPECIFICITY**

This antibody recognizes human hGH . The other species not tested.

### **STORAGE**

The antibodies are stable for 24 months from date of receipt when stored at -20oC to -70oC. The antibodies can be stored at 2oC-8oC for three month without detectable loss of activity. Avoid repeated freezing-thawing cycles.

### **APPLICATIONS/SUGGESTED WORKING DILUTIONS\***

- Western Blot: 0.1-1 µg/ml
- ELISA: 0.01-0.1 µg/ml
- Immunoprecipitation: 2-5 µg/ml
- IHC: 2-10 µg/ml
- Flow cytometry: Not tested
- Molecular Weight: nan
- Positive Control: Kidney Tissue
- Cellular Location: Cell Membrane

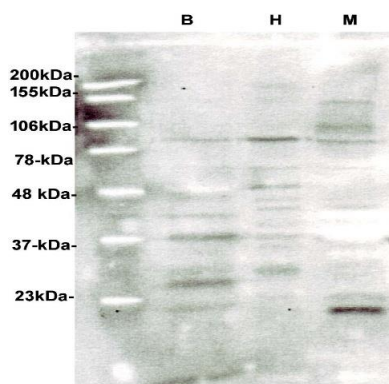
\*Optimal dilutions should be determined by researchers for the specific applications.

### **FOR RESEARCH USE ONLY.**

AbboMax, Inc 2528 Qume Drive, Suite 8, San Jose, California 95131, USA  
1 408-573-1898 (Tel). 1 408-573-1858 (Fax). [www.abbomax.com](http://www.abbomax.com) [info@abbomax.com](mailto:info@abbomax.com)



## DATA ATTACHMENTS



Western Blot: The whole cell lysate derived from mouse brain (B), heart (H) and muscle (M) tissue at 50 µg/lane loaded onto SDS-PAGE, transferred onto a NC membrane, then blotted by Mouse anti GH antibody (Cat#500-3124) at 1:200. An immunoreactive band protein is observed around ~21kD.

## REFERENCES

### FOR RESEARCH USE ONLY.

AbboMax, Inc 2528 Qume Drive, Suite 8, San Jose, California 95131, USA  
1 408-573-1898 (Tel). 1 408-573-1858 (Fax). [www.abbomax.com](http://www.abbomax.com) [info@abbomax.com](mailto:info@abbomax.com)