



Rabbit anti GSK-3alpha Polyclonal Antibody

Alternative Name(s): Glycogen Synthase Kinase 3a; GSK3A;

Order Information

- **Description:** GSK-3alpha
- **Catalogue:** 500-2914
- **Lot:** See label
- **Size:** 100ug/200ul
- **Host:** Rabbit
- **Clone:** nan
- **Application:** IHC(P), WB
- **Reactivity:** Hu, Ms, Rt

ANTIGEN PREPARATION

A synthetic peptide corresponding to N-terminus of human GSK3-alpha protein. This sequence is identical among human, mouse and rat.

BACKGROUND

Glycogen Synthase Kinase-3 has two isoforms, GSK-3 α and GSK3 β . GSK3 is a serine/threonine kinase that affects glycogen metabolism by phosphorylating and down-regulating the activity of muscle glycogen synthase as well as the regulation in Wnt signal pathway. GSK-3 alpha reduces the substrates beta-catenin and tau to imply an important role in Wnt signaling and tauopathies such as Alzheimer's disease..

PURIFICATION

The Rabbit IgG is purified by Epitope Affinity Purification

FORMULATION

This affinity purified antibody is supplied in sterile Phosphatebuffered saline (pH7.2) containing antibody stabilizer

SPECIFICITY

This antibody recognizes GSK-3 alpha. It reacts with human, mouse and rat. The other species are not tested.

STORAGE

The antibodies are stable for 24 months from date of receipt when stored at -20oC to -70oC. The antibodies can be stored at 2oC-8oC for three month without detectable loss of activity. Avoid repeated freezing-thawing cycles.

APPLICATIONS/SUGGESTED WORKING DILUTIONS*

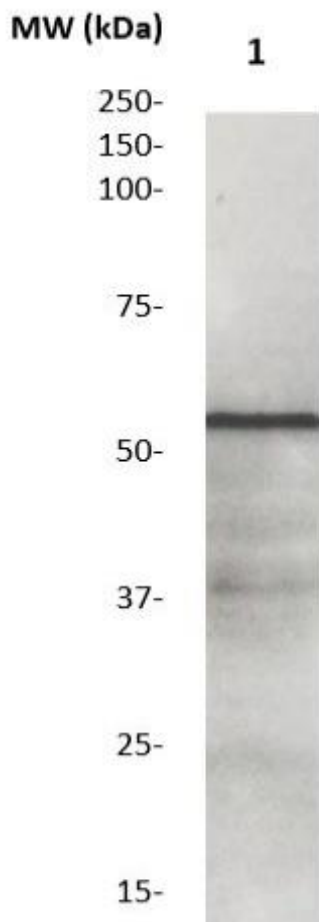
- Western Blot: 0.1-1 μ g/ml
- ELISA: 0.01-0.1 μ g/ml
- Immunoprecipitation: 2-5 μ g/ml
- IHC: 2-10 μ g/ml
- Flow cytometry: Not tested
- Molecular Weight: 52.0
- Positive Control: Kidney Tissue
- Cellular Location: Cell Membrane

*Optimal dilutions should be determined by researchers for the specific applications.

FOR RESEARCH USE ONLY.

AbboMax, Inc 2528 Qume Drive, Suite 8, San Jose, California 95131, USA
1 408-573-1898 (Tel). 1 408-573-1858 (Fax). www.abbomax.com info@abbomax.com

DATA ATTACHMENTS



Western Blot: The 3T3 cell lysate was resolved onto 10% SDS-PAGE, transferred onto NC membrane, and followed by an immunoblotting with Rabbit anti GSK-3 alpha (Cat#500-2914) antibody at 1:500 (lane 1). Lane 2 was pre-incubated with immunizing peptide. Observed a major immunoreactive band at molecular weight ~52kDa.

REFERENCES

FOR RESEARCH USE ONLY.

AbboMax, Inc 2528 Qume Drive, Suite 8, San Jose, California 95131, USA
1 408-573-1898 (Tel). 1 408-573-1858 (Fax). www.abbomax.com info@abbomax.com