



Rabbit anti PDGFR-alpha Polyclonal Antibody

Alternative Name(s): platelet-derived growth factor receptor, alpha polypeptide; PDGFRA

Order Information

- **Description:** PDGFR-alpha
- **Catalogue:** 500-2694
- **Lot:** See label
- **Size:** 100ug/200ul
- **Host:** Rabbit
- **Clone:** nan
- **Application:** IHC(P), WB
- **Reactivity:** Hu, Rt

ANTIGEN PREPARATION

A synthetic peptide corresponding to C-terminus of human PDGFR-alpha

BACKGROUND

Platelet-derived growth factor (PDGF) is a mitogen for mesenchyme- and glia-derived cells. PDGF consists of two chains, A and B, which dimerize to form functionally distinct isoforms, PDGF-AA, PDGF-AB and PDGF-BB. These three isoforms bind with different affinities to two receptor types, PDGFR- α and - β , which are endowed with protein tyrosine kinase domains. PDGFR- α can bind to both A and B subunits of PDGF, while PDGFR- β can only bind the B subunit. Ligand binding promotes either homo- or heterodimerization of the PDGF receptors in a specific manner. PDGF-AA induces the dimerization of two α receptors, PDGF-AB induces dimerization of $\alpha\alpha$ and $\alpha\beta$ and PDGF-BB induces the formation of three types of dimers, $\alpha\alpha$, $\alpha\beta$ and $\beta\beta$. Translocation of the PDGFR- β gene with the Tel gene is linked to chronic myelomonocytic leukemia (CMML), a myelodysplastic syndrome, and demonstrates the oncogenic potential of the PDGF receptors.

PURIFICATION

The Rabbit IgG is purified by Epitope Affinity Purification

FORMULATION

This affinity purified antibody is supplied in sterile Phosphatebuffered saline (pH7.2) containing antibody stabilizer

SPECIFICITY

This antibody recognizes human and rat PDGFR-alpha. The other species not tested.

STORAGE

The antibodies are stable for 24 months from date of receipt when stored at -20°C to -70°C . The antibodies can be stored at 2°C - 8°C for three month without detectable loss of activity. Avoid repeated freezing-thawing cycles.

APPLICATIONS/SUGGESTED WORKING DILUTIONS*

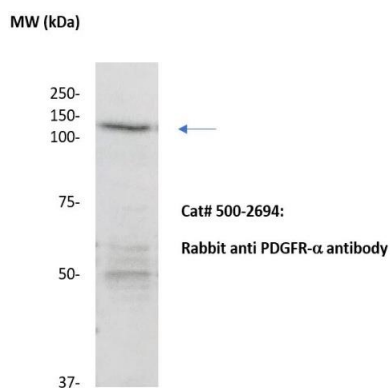
- Western Blot: 0.1-1 $\mu\text{g/ml}$
- ELISA: 0.01-0.1 $\mu\text{g/ml}$
- Immunoprecipitation: 2-5 $\mu\text{g/ml}$
- IHC: 2-10 $\mu\text{g/ml}$
- Flow cytometry: Not tested
- Molecular Weight: 122.7
- Positive Control: Kidney Tissue
- Cellular Location: Cell Membrane

*Optimal dilutions should be determined by researchers for the specific applications.

FOR RESEARCH USE ONLY.

AbboMax, Inc 2528 Qume Drive, Suite 8, San Jose, California 95131, USA
1 408-573-1898 (Tel). 1 408-573-1858 (Fax). www.abbomax.com info@abbomax.com

DATA ATTACHMENTS



Western Blot: The whole lysate derived from A549 (20 ug/lane) immunoblotted by Rabbit anti –PDGRR-alpha (Cat# 500-2694) at 1:500. Observed a major immunoreactive band at molecular weight kDa.

REFERENCES

FOR RESEARCH USE ONLY.

AbboMax, Inc 2528 Qume Drive, Suite 8, San Jose, California 95131, USA
1 408-573-1898 (Tel). 1 408-573-1858 (Fax). www.abbomax.com info@abbomax.com