



Rabbit anti p27/Kip Polyclonal Antibody

Alternative Name(s): Cyclin-dependent kinase inhibitor 1B; CDKN1B; P27; P27KIP1

Order Information

- **Description:** p27/Kip
- **Catalogue:** 500-2604
- **Lot:** See label
- **Size:** 100ug/200ul
- **Host:** Rabbit
- **Clone:** nan
- **Application:** IHC(P), WB, IP
- **Reactivity:** Hu, Ms, Rt

ANTIGEN PREPARATION

A synthetic peptide corresponding to the C-terminus of human p27. This sequence is identical among human, rat, mouse, bovine, dog origins.

BACKGROUND

The p27Kip1 gene codes for a cyclin-dependent kinase inhibitor implicated in G1 arrest by transforming growth factor beta, cell-cell contact, agents that elevate cyclic AMP, and the growth-inhibitory drug rapamycin. p27 binds to and inhibits complexes formed by cyclin E-cdk2, cyclin A-cdk2, and cyclin D-cdk4. The involvement of p27 in the negative regulation of cell proliferation suggests that it may also function as a tumor suppressor gene. The degradation of p27, which is triggered by its CDK dependent phosphorylation and subsequent ubiquitination by SCF complexes, is required for the cellular transition from quiescence to the proliferative state.

PURIFICATION

The Rabbit IgG is purified by Epitope Affinity Purification

FORMULATION

This affinity purified antibody is supplied in sterile Phosphatebuffered saline (pH7.2) containing antibody stabilizer

SPECIFICITY

This antibody recognizes ~27 kDa of human P27Kip1 protein. It also reacts with mouse and rat. The other species are not tested.

STORAGE

The antibodies are stable for 24 months from date of receipt when stored at -20oC to -70oC. The antibodies can be stored at 2oC-8oC for three month without detectable loss of activity. Avoid repeated freezing-thawing cycles.

APPLICATIONS/SUGGESTED WORKING DILUTIONS*

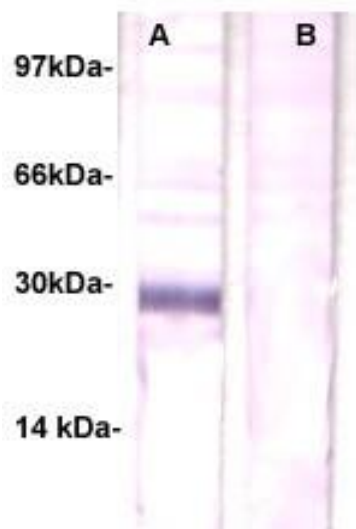
- Western Blot: 0.1-1 µg/ml
- ELISA: 0.01-0.1 µg/ml
- Immunoprecipitation: 2-5 µg/ml
- IHC: 2-10 µg/ml
- Flow cytometry: Not tested
- Molecular Weight: 27.0
- Positive Control: Kidney Tissue
- Cellular Location: Cell Membrane

*Optimal dilutions should be determined by researchers for the specific applications.

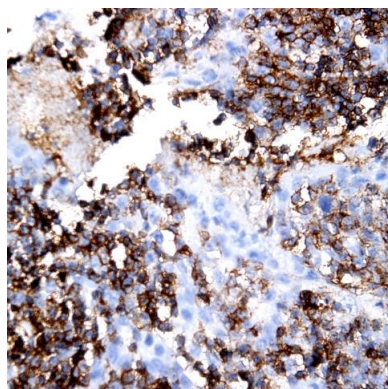
FOR RESEARCH USE ONLY.

AbboMax, Inc 2528 Qume Drive, Suite 8, San Jose, California 95131, USA
1 408-573-1898 (Tel). 1 408-573-1858 (Fax). www.abbomax.com info@abbomax.com

DATA ATTACHMENTS



Western Blot: The whole cell lysate derived from Hela cells was loaded in 12% SDS-PAGE, transferred onto NC membrane, and immune-probed by Rabbit anti-p27Kip1 (Cat#500-2604) at 1:500. An immune-reactive band is observed around ~27kDa (lane A). This band was abolished by immunizing peptide (lane B).



Immunohistochemistry: Human Lymph Node (FFPE) stained with Rabbit Anti-p27Kip1 antibody (Cat# 500-2604) at 1:100 for 10 min @ RT. Staining of formalin-fixed tissue requires boiling tissue sections in 10 mM Citrate Buffer, pH 6.0 for 10 min followed by cooling at RT for 20 min.

REFERENCES

FOR RESEARCH USE ONLY.

AbboMax, Inc 2528 Qume Drive, Suite 8, San Jose, California 95131, USA
1 408-573-1898 (Tel). 1 408-573-1858 (Fax). www.abbomax.com info@abbomax.com