



Rabbit anti ELK-1(pS383) Polyclonal Antibody

Alternative Name(s): ELK1; member of ETS oncogene family

Order Information

- **Description:** ELK-1(pS383)
- **Catalogue:** 500-12234
- **Lot:** See label
- **Size:** 100ug/200ul
- **Host:** Rabbit
- **Clone:** nan
- **Application:** IHC(P), WB, IP
- **Reactivity:** Hu, Ms, Rt

ANTIGEN PREPARATION

A synthetic peptide corresponding to residues surrounding Ser 282 of human ELK-1.

BACKGROUND

Elk1 belongs to ets proto-oncogene family. It functions as a transcription activator. Elk-1, a major nuclear target of extracellular signal-regulated kinases, is a strong transactivator of serum-responsive element (SRE) driven gene expression. Elk1 forms SRF-dependent ternary complexes with the SRE. It is important because a key event in the response of cells to proliferative signals is the rapid, transient induction of the c-fos proto-oncogene, which is mediated through the SRE in the fos promoter

PURIFICATION

The Rabbit IgG is purified by site-modified Epitope Affinity Purification.

FORMULATION

This affinity purified antibody is supplied in sterile Tris-buffered saline (pH7.2) containing antibody stabilizer

SPECIFICITY

This antibody recognizes STAT6 (pY641) with a phosphorylated sites of Tyr641. It does not cross-react with non-phosphospecific peptide.

STORAGE

The antibodies are stable for 24 months from date of receipt when stored at -20oC to -70oC. The antibodies can be stored at 2oC-8oC for three month without detectable loss of activity. Avoid repeated freezing-thawing cycles.

APPLICATIONS/SUGGESTED WORKING DILUTIONS*

- Western Blot: 0.1-1 µg/ml
- ELISA: 0.01-0.1 µg/ml
- Immunoprecipitation: 2-5 µg/ml
- IHC: 2-10 µg/ml
- Flow cytometry: Not tested
- Molecular Weight: 62.0
- Positive Control: Kidney Tissue
- Cellular Location: Cell Membrane

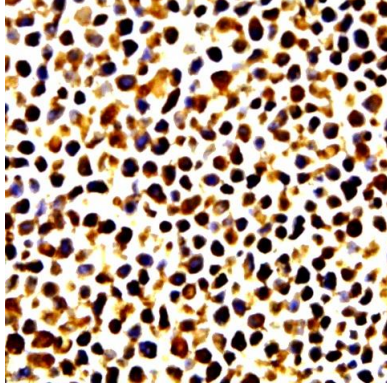
*Optimal dilutions should be determined by researchers for the specific applications.

FOR RESEARCH USE ONLY.

AbboMax, Inc 2528 Qume Drive, Suite 8, San Jose, California 95131, USA
1 408-573-1898 (Tel). 1 408-573-1858 (Fax). www.abbomax.com info@abbomax.com



DATA ATTACHMENTS



Immunohistochemistry: The whole cell pellet (FFPE) was stained with Rabbit anti ELK-1 (pS383) (Cat. 500-12234) at 1:100 for 30 min @ RT. Staining of formalin-fixed paraffin embedded tissue (FFPE) requires boiling tissue sections in 10 mM Citrate Buffer, pH 6.0 for 10 min followed by cooling at RT for 20 min.

REFERENCES

FOR RESEARCH USE ONLY.

AbboMax, Inc 2528 Qume Drive, Suite 8, San Jose, California 95131, USA
1 408-573-1898 (Tel). 1 408-573-1858 (Fax). www.abbomax.com info@abbomax.com