



## Mouse anti Bcl-2a Monoclonal Antibody

Alternative Name(s): B-cell lymphoma protein 2, (alpha isoforms), BCL2, BCL-2a.

### Order Information

- **Description:** Bcl-2a
- **Catalogue:** 500-1124
- **Lot:** See label
- **Size:** 100 ug/200 ul
- **Host:** Mouse
- **Clone:** 100
- **Application:** IHC(P), WB, IP, IF, FC
- **Cross Reactivity:** Hu

### **ANTIGEN PREPARATION**

A synthetic peptide derived from internal sequence (40-55aa) of human BCL-2 oncoprotein.

### **BACKGROUND**

The Bcl-2 gene codes for a 26 kDa protein which has been implicated in the control of cell death by apoptosis, in normal tissues, expression of bcl-2 is restricted to cells and tissues that are characterized by apoptotic cell turnover. Bcl-2 protein exerts a survival function in response to a wide range of apoptotic stimuli through inhibition of mitochondrial cytochrome c release, thus it is also considered as an inner mitochondrial membrane protein which can be expressed in lymphoma and breast carcinoma cells. This protein modulates mitochondrial calcium homeostasis and proton flux. BCL-2 protein is frequently overexpressed in many lymphoid malignancies, thus it can immunohistologically distinguish neoplastic germinal centers from reactive ones.

### **PURIFICATION**

The mouse IgG is purified by Protein A-Affinity Chromatography according to Isotyping

### **FORMULATION**

This affinity purified antibody is supplied in sterile Phosphate buffered saline (pH7.2) containing antibody stabilizer.

### **SPECIFICITY**

This antibody recognizes human Bcl-2 oncoprotein only.

### **STORAGE**

The antibodies are stable for 12 months from date of receipt when stored at -20oC. The antibodies can be stored at 2oC-8oC for one month without detectable loss of activity. Avoid repeated freezing-thawing cycles.

### **APPLICATIONS/SUGGESTED WORKING DILUTIONS\***

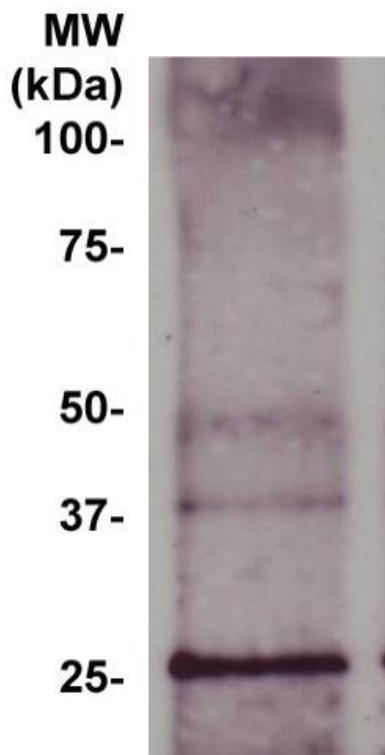
- Western Blot: 0.1-1 µg/ml
- ELISA: 0.01-0.1 µg/ml
- Immunoprecipitation: 2-5 µg/ml
- IHC: 2-10 µg/ml
- Flow cytometry: 5-10 µg/ml
- MW (kDa): 26 kDa
- Positive Control: Kidney Tissue
- Cellular Location: Cell Membrane

\*Optimal dilutions should be determined by researchers for the specific applications.

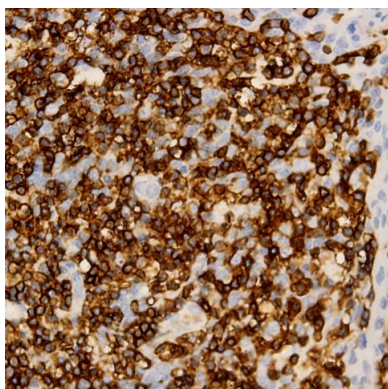
### **FOR RESEARCH USE ONLY.**

AbboMax, Inc 2528 Qume Drive, Suite 8, San Jose, California 95131, USA  
1 408-573-1898 (Tel). 1 408-573-1858 (Fax). [www.abbomax.com](http://www.abbomax.com) [info@abbomax.com](mailto:info@abbomax.com)

## DATA ATTACHMENTS



Western Blot: The whole cell lysate derived from Raji cell was separated in 12% SDS-PAGE, transferred onto NC membrane, and immunoblotted by Mouse anti – Bcl-2 (Cat#500-1124) antibody at 1:500. An immunoreactive band around ~26 kDa is observed.



Immunohistochemistry: Human Tonsil (FFPE) stained with Mouse anti-BCL-2 (Cat#500-1124) at 1:200 for 10 min @ RT. Staining of formalin-fixed tissue requires boiling tissue sections in 10 mM Citrate Buffer, pH 6.0 for 10 min followed by cooling at RT for 20 min.

## REFERENCES

Camlica H., et al. Statistical interpretation of CA125 and Bcl-2 in serum of patients with late stage ovarian cancer. Am J Clin Oncol, 2008 Dec, 31(6): 585-8.

## FOR RESEARCH USE ONLY.

AbboMax, Inc 2528 Qume Drive, Suite 8, San Jose, California 95131, USA  
1 408-573-1898 (Tel). 1 408-573-1858 (Fax). [www.abbomax.com](http://www.abbomax.com) [info@abbomax.com](mailto:info@abbomax.com)