



Rabbit anti Telomerase Polyclonal Antibody

Alternative Name(s): telomerase reverse transcriptase; Tert

Order Information

- **Description:** Telomerase
- **Catalogue:** 500-11034
- **Lot:** See label
- **Size:** 100ug/200ul
- **Host:** Rabbit
- **Clone:** nan
- **Application:** IHC(P), WB
- **Reactivity:** Hu

ANTIGEN PREPARATION

A synthetic peptide corresponding to the C-term of TERT protein. This sequence is identical to human, mouse and rat.

BACKGROUND

Telomeres are specialized structures at the ends of eukaryotic chromosomes which appear to function in chromosome stabilization, positioning and replication. At each cell division, the length of telomeric TTAGGG DNA repeats is shortened and cells ultimately stop dividing. Telomerase is a reverse transcriptase that synthesizes telomere DNA thereby compensating for telomere loss. There are three major components of telomerase, i.e., human telomerase RNA (hTERC), telomerase-associated protein (TEP1), and the human telomerase reverse transcriptase (hTERT). Telomerase is expressed at high levels in the nucleus of proliferating cells, lymphocytes, primary tumors and cancer cell lines.

PURIFICATION

The Rabbit IgG is purified by Epitope Affinity Purification

FORMULATION

This affinity purified antibody is supplied in sterile Phosphatebuffered saline (pH7.2) containing antibody stabilizer

SPECIFICITY

This antibody reacts with human Telomerase. It cross-reacts to mouse and rat. The other species are not tested.

STORAGE

The antibodies are stable for 24 months from date of receipt when stored at -20°C to -70°C . The antibodies can be stored at 2°C - 8°C for three month without detectable loss of activity. Avoid repeated freezing-thawing cycles.

APPLICATIONS/SUGGESTED WORKING DILUTIONS*

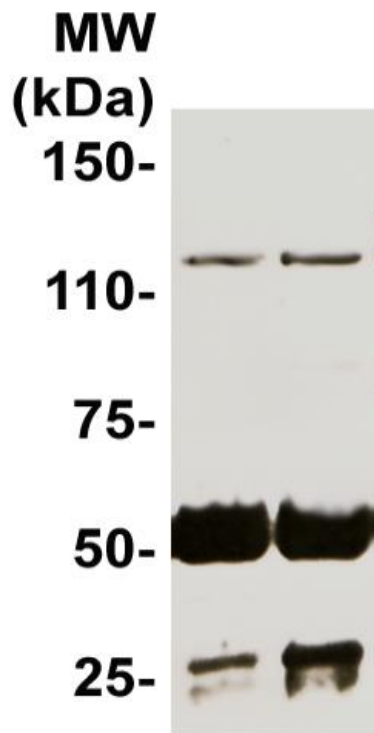
- Western Blot: 0.1-1 $\mu\text{g/ml}$
- ELISA: 0.01-0.1 $\mu\text{g/ml}$
- Immunoprecipitation: 2-5 $\mu\text{g/ml}$
- IHC: 2-10 $\mu\text{g/ml}$
- Flow cytometry: Not tested
- Molecular Weight: 127.0
- Positive Control: Kidney Tissue
- Cellular Location: Cell Membrane

*Optimal dilutions should be determined by researchers for the specific applications.

FOR RESEARCH USE ONLY.

AbboMax, Inc 2528 Qume Drive, Suite 8, San Jose, California 95131, USA
1 408-573-1898 (Tel). 1 408-573-1858 (Fax). www.abbomax.com info@abbomax.com

DATA ATTACHMENTS



Western Blot: 5 mg of the total protein derived from the cell lysate of 3T3 (left lane) and MCF-7 (right lane) were immunoprecipitated by 5 ug of the Rabbit anti Telomerase (Cat#500-11034), extract and separated onto 7.5% SDS-PAGE, transferred onto NC membrane and followed by immunoblotting of the same primary antibody @ 1:1000. An immunoreactive bands was observed around ~127 kDa. (50kDa and 25 kDa are light and heavy chains respectively).

REFERENCES

FOR RESEARCH USE ONLY.