



Rabbit anti SUMO-1/Sentrin-1 Polyclonal Antibody

Alternative Name(s): Small ubiquitin-related modifier 1; Sentrin-1, UBL1, SMT3C

Order Information

- **Description:** SUMO-1/Sentrin-1
- **Catalogue:** 500-10994
- **Lot:** See label
- **Size:** 100ug/200ul
- **Host:** Rabbit
- **Clone:** nan
- **Application:** WB
- **Reactivity:** Hu

ANTIGEN PREPARATION

A synthetic peptide derived from N-terminus of human Sentrin-1 protein. This sequence is identical to human, mouse and rat

BACKGROUND

SUMO-1, also known as Sentrin-1, is a 101 amino acids peptide that has high homologous to Sentrin-2/SUMO-2. This ubiquitin-like protein which can be covalently attached to proteins as a monomer or as a lysine-linked polymer as part of a post-translational modification system. It may function as an antagonist of ubiquitin in degradation process. This protein is involved in a variety of cellular processes, such as nuclear transport, transcriptional regulation, apoptosis, signal transduction, and protein stability. It is not active until the last four amino acids of the carboxy-terminus have been cleaved off. SUMO-1 is also known to form a complex with Ran GAP1.

PURIFICATION

The Rabbit IgG is purified by Epitope Affinity Purification

FORMULATION

This affinity purified antibody is supplied in sterile Phosphatebuffered saline (pH7.2) containing antibody stabilizer

SPECIFICITY

This antibody reacts with SUMO-1 of human, mouse and rat. The other species are not tested.

STORAGE

The antibodies are stable for 24 months from date of receipt when stored at -20oC to -70oC. The antibodies can be stored at 2oC-8oC for three month without detectable loss of activity. Avoid repeated freezing-thawing cycles.

APPLICATIONS/SUGGESTED WORKING DILUTIONS*

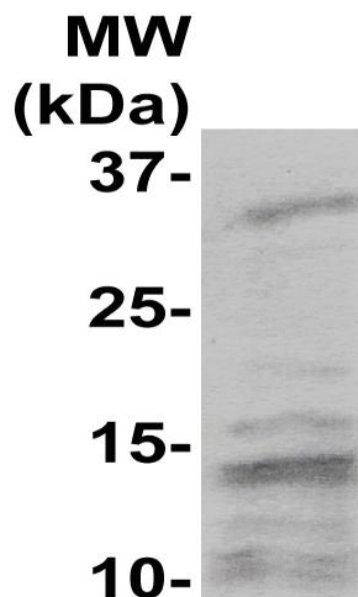
- Western Blot: 0.1-1 µg/ml
- ELISA: Not tested
- Immunoprecipitation: 2-5 µg/ml
- IHC: 2-10 µg/ml
- Flow cytometry: Not tested
- Molecular Weight: 11.0
- Positive Control: Kidney Tissue
- Cellular Location: Cell Membrane

*Optimal dilutions should be determined by researchers for the specific applications.

FOR RESEARCH USE ONLY.

AbboMax, Inc 2528 Qume Drive, Suite 8, San Jose, California 95131, USA
1 408-573-1898 (Tel). 1 408-573-1858 (Fax). www.abbomax.com info@abbomax.com

DATA ATTACHMENTS



Western Blot: The cell lysate derived from Hela cells was immunoblotted by the Rabbit anti Sentrin-1 (Cat#500-10994) @ 1:500. An immunoreactive band is observed at ~10 kDa.

REFERENCES

FOR RESEARCH USE ONLY.

AbboMax, Inc 2528 Qume Drive, Suite 8, San Jose, California 95131, USA
1 408-573-1898 (Tel). 1 408-573-1858 (Fax). www.abbomax.com info@abbomax.com