



Rabbit anti SUMO-2/Sentrin-2 Polyclonal Antibody

Alternative Name(s): Small ubiquitin-related modifier 2; Sentrin-2, SMT3

Order Information

- **Description:** SUMO-2/Sentrin-2
- **Catalogue:** 500-10504
- **Lot:** See label
- **Size:** 100ug/200ul
- **Host:** Rabbit
- **Clone:** nan
- **Application:** WB
- **Reactivity:** Hu, Ms, Rt

ANTIGEN PREPARATION

A synthetic peptide derived from C-terminus of human Sentrin-2 protein. This sequence is identical to human, mouse and rat.

BACKGROUND

Sentrin-2 also known as SUMO-2 is a 95-amino acids peptide that has high homologous to Sentrin-1/SUMO-1. This novel ubiquitin-like protein that can be covalently attached to proteins as a monomer or as a lysine-linked polymer. Covalent attachment via an isopeptide bond to its substrates requires prior activation by the E1 complex SAE1-SAE2 and linkage to the E2 enzyme UBE2I, and can be promoted by an E3 ligase such as PIAS1-4, RANBP2 or CBX4. This post-translational modification on lysine residues of proteins plays a crucial role in a number of cellular processes such as nuclear transport, DNA replication and repair, mitosis and signal transduction. Polymeric SUMO2 chains are also susceptible to polyubiquitination which functions as a signal for proteasomal degradation of modified proteins.

PURIFICATION

The Rabbit IgG is purified by Epitope Affinity Purification

FORMULATION

This affinity purified antibody is supplied in sterile Phosphatebuffered saline (pH7.2) containing antibody stabilizer

SPECIFICITY

This antibody reacts with SUMO-2 protein. It cross-reacts to human, mouse and rat. The other species are not tested.

STORAGE

The antibodies are stable for 24 months from date of receipt when stored at -20oC to -70oC. The antibodies can be stored at 2oC-8oC for three month without detectable loss of activity. Avoid repeated freezing-thawing cycles.

APPLICATIONS/SUGGESTED WORKING DILUTIONS*

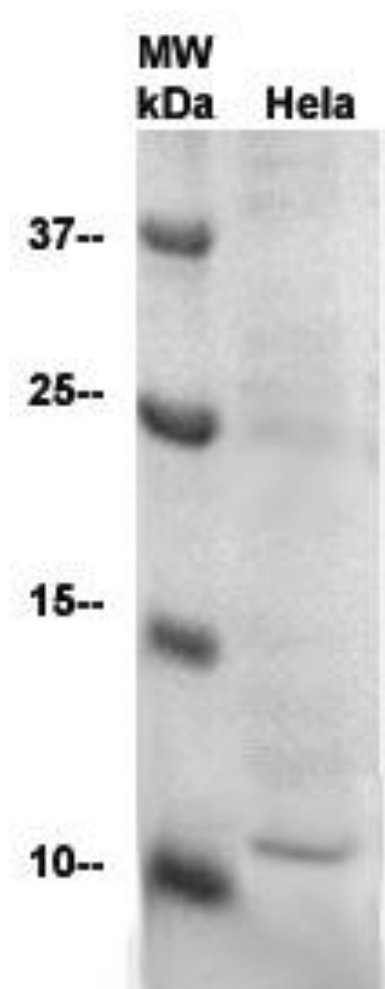
- Western Blot: 0.1-1 µg/ml
- ELISA: Not tested
- Immunoprecipitation: 2-5 µg/ml
- IHC: 2-10 µg/ml
- Flow cytometry: Not tested
- Molecular Weight: 10.0
- Positive Control: Kidney Tissue
- Cellular Location: Cell Membrane

*Optimal dilutions should be determined by researchers for the specific applications.

FOR RESEARCH USE ONLY.

AbboMax, Inc 2528 Qume Drive, Suite 8, San Jose, California 95131, USA
1 408-573-1898 (Tel). 1 408-573-1858 (Fax). www.abbomax.com info@abbomax.com

DATA ATTACHMENTS



Western Blot: The cell lysate derived from HeLa cells was immunoblotted by the Rabbit anti Sentrin-2 (Cat#500-10504) @ 1:500. An immunoreactive band is observed at ~10 kDa.

REFERENCES

FOR RESEARCH USE ONLY.

AbboMax, Inc 2528 Qume Drive, Suite 8, San Jose, California 95131, USA
1 408-573-1898 (Tel). 1 408-573-1858 (Fax). www.abbomax.com info@abbomax.com