



Rabbit anti ERAB Polyclonal Antibody

Alternative Name(s): hydroxysteroid (17-beta) dehydrogenase 10

Order Information

- **Description:** ERAB
- **Catalogue:** 500-10324
- **Lot:** See label
- **Size:** 100ug/200ul
- **Host:** Rabbit
- **Clone:** nan
- **Application:** IHC(P), WB
- **Reactivity:** Hu, Ms, Rt

ANTIGEN PREPARATION

A synthetic peptide corresponding to aa 100-116 of human ERAB protein.

BACKGROUND

Mutations in several genes associated with early onset Alzheimer's result in increased extracellular concentrations of the longer form of the beta-amyloid peptide Ab 1-42 relative to Ab 1-40. It is this longer form of Ab that has been shown to be toxic to neurons and may serve as a catalyst for the aggregation and deposition of Ab to produce the neurotoxic effects associated with senile plaque formation. Using the Ab peptide in a yeast two-hybrid screen, a novel interacting protein designated the endoplasmic reticulum-associated amyloid beta-peptide-binding protein (ERAB)/L-3-hydroxyacyl-CoA dehydrogenase type II has been identified. It is shown to be expressed at high levels in Alzheimer's disease-affected brain. ERAB may contribute to neuronal dysfunction in Alzheimer's disease.

PURIFICATION

The Rabbit IgG is purified by Epitope Affinity Purification

FORMULATION

This affinity purified antibody is supplied in sterile Phosphatebuffered saline (pH7.2) containing antibody stabilizer

SPECIFICITY

This antibody recognizes ERAB protein. It cross-reacts to human, mouse and rat. Others are not tested.

STORAGE

The antibodies are stable for 24 months from date of receipt when stored at -20oC to -70oC. The antibodies can be stored at 2oC-8oC for three month without detectable loss of activity. Avoid repeated freezing-thawing cycles.

APPLICATIONS/SUGGESTED WORKING DILUTIONS*

- Western Blot: 0.5-5 µg/ml
- ELISA: nan
- Immunoprecipitation: 2-5 µg/ml
- IHC: 1-5 µg/ml
- Flow cytometry: Not tested
- Molecular Weight: 27.0
- Positive Control: Kidney Tissue
- Cellular Location: Cell Membrane

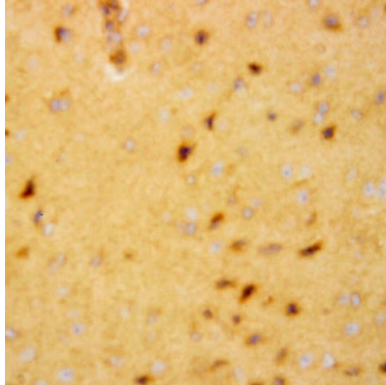
*Optimal dilutions should be determined by researchers for the specific applications.

FOR RESEARCH USE ONLY.

AbboMax, Inc 2528 Qume Drive, Suite 8, San Jose, California 95131, USA
1 408-573-1898 (Tel). 1 408-573-1858 (Fax). www.abbomax.com info@abbomax.com



DATA ATTACHMENTS



Immunohistochemistry: Human cerebellum stained with Rabbit Anti-ERAB (Cat# 500-10324) at 1:50 dilution. Staining of formalin-fixed tissue requires boiling tissue sections in 10 mM Citrate Buffer, pH 6.0 for 10 min followed by cooling at RT for 20 min.

REFERENCES

FOR RESEARCH USE ONLY.

AbboMax, Inc 2528 Qume Drive, Suite 8, San Jose, California 95131, USA
1 408-573-1898 (Tel). 1 408-573-1858 (Fax). www.abbomax.com info@abbomax.com