



## Rabbit anti SOCS-4 Polyclonal Antibody

Alternative Name(s): Suppressor of Cytokine Signaling 4 (SOCS4); SOCS7

### Order Information

- **Description:** SOCS-4
- **Catalogue:** 500-10164
- **Lot:** See label
- **Size:** 100 ug/200 ul
- **Host:** Rabbit
- **Clone:** nan
- **Application:** WB
- **Cross Reactivity:** Hu

### **ANTIGEN PREPARATION**

A synthetic peptide corresponding to the C-terminus of SOCS-4 protein from human, mouse and rat origins.

### **BACKGROUND**

Cytokines induce a variety of biological responses by binding to specific cell surface receptors and activating cytoplasmic signal transduction pathways which are suppressed by other transcriptional factors. Proteins that mediate these signals from the cell surface to the nucleus include JAKs and STATs, while SOCS (Suppressor of cytokine signaling) proteins inhibit those signaling. The SOCS family comprises at least 8 members, SOCS1 to SOCS7 and CIS (cytokine inducible SH2 containing protein). Structurally, the SOCS proteins are composed of an N terminal region of variable length and amino acid composition, a central SH2 domain, and a previously unrecognized C terminal motif named the SOCS box. SOCS4, SOCS6 and SOCS7 are expressed ubiquitously in murine tissues.

### **PURIFICATION**

The Rabbit IgG is purified by Epitope Affinity Purification

### **FORMULATION**

This affinity purified antibody is supplied in sterile Phosphate buffered saline (pH7.2) containing antibody stabilizer.

### **SPECIFICITY**

This antibody recognizes ~50 kDa of SOCS-4 protein from human and mouse origins. The other species are not tested.

### **STORAGE**

The antibodies are stable for 12 months from date of receipt when stored at -20oC. The antibodies can be stored at 2oC-8oC for one month without detectable loss of activity. Avoid repeated freezing-thawing cycles.

### **APPLICATIONS/SUGGESTED WORKING DILUTIONS\***

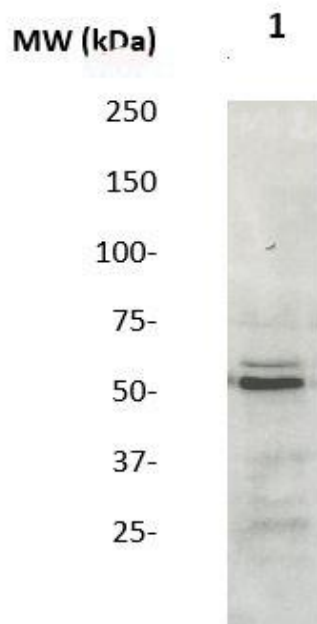
- Western Blot: 0.1-1 µg/ml
- ELISA: 0.01-0.1 µg/ml
- Immunoprecipitation: 2-5 µg/ml
- IHC: 2-10 µg/ml
- Flow cytometry: Not tested
- MW (kDa): 50 kDa
- Positive Control: Kidney Tissue
- Cellular Location: Cell Membrane

\*Optimal dilutions should be determined by researchers for the specific applications.

### **FOR RESEARCH USE ONLY.**

AbboMax, Inc 2528 Qume Drive, Suite 8, San Jose, California 95131, USA  
1 408-573-1898 (Tel). 1 408-573-1858 (Fax). [www.abbomax.com](http://www.abbomax.com) [info@abbomax.com](mailto:info@abbomax.com)

## DATA ATTACHMENTS



Western Blot: The cell lysates derived from Hela (20 ug/lane) was immuno-probed by Rabbit anti-SCOS-4 (Cat#500-10164) at 1:500. An immune-reactive band is observed around ~50 kDa.

## REFERENCES

Bullock, AN et al. Structure of the SOCS4-ElonginB/C complex reveals a distinct SOCS box interface and the molecular basis for SOCS-dependent EGFR degradation. *Structure*, 2007 Nov;15(11):1493-504.

**FOR RESEARCH USE ONLY.**

AbboMax, Inc 2528 Qume Drive, Suite 8, San Jose, California 95131, USA  
1 408-573-1898 (Tel). 1 408-573-1858 (Fax). [www.abbomax.com](http://www.abbomax.com) [info@abbomax.com](mailto:info@abbomax.com)