



Rabbit anti PID/MTA2 Polyclonal Antibody

Alternative Name(s): Metastasis-associated gene family, member 2 (MTA2); MTA1L1; Metastasis associated gene 1-like 1 (MTA1-L1); p53 target protein in deacetylase complexes (PID).

Order Information

- **Description:** PID/MTA2
- **Catalogue:** 500-10034
- **Lot:** See label
- **Size:** 100ug/200ul
- **Host:** Rabbit
- **Clone:** nan
- **Application:** WB, IHC(P)
- **Reactivity:** Hu, Ms, Rt

ANTIGEN PREPARATION

A synthetic peptide corresponding to the C-terminus of human PID/MTA2. This sequence is identical within human, rat, mouse, bovine and dog origins.

BACKGROUND

The mitogen-activated protein kinases (MAPK), also known as extracellular signal-related kinase (ERKs), are praline-directed protein kinases that mediate the effects of numerous extracellular stimuli on a wide array of biological processes, such as cellular proliferation, differentiation and death. There are three groups of mammalian MAP kinases including the ERK, JNK, and p38 MAP kinases. The MAPKs family is also characterized by their requirement for dual phosphorylation at a conserved threonine and tyrosine residue for enzymatic activation and both must be phosphorylated for full enzymatic activation. The closely related ERK2 (44kDa) and ERK1 (42kDa) kinases are characterized by their requirement for dual phosphorylation at a conserved T-E-Y motif. While JNK1 is activated by dual phosphorylation at a T-P-Y motif and p38 is also activated by dual phosphorylation at a T-G-Y motif.

PURIFICATION

The Rabbit IgG is purified by Epitope Affinity Purification

FORMULATION

This affinity purified antibody is supplied in sterile Phosphatebuffered saline (pH7.2) containing antibody stabilizer

SPECIFICITY

This antibody recognizes human PID/MTA2 protein. It also reacts with mouse and rat. The other species are not tested.

STORAGE

The antibodies are stable for 24 months from date of receipt when stored at -20oC to -70oC. The antibodies can be stored at 2oC-8oC for three month without detectable loss of activity. Avoid repeated freezing-thawing cycles.

APPLICATIONS/SUGGESTED WORKING DILUTIONS*

- Western Blot: 0.1-1 µg/ml
- ELISA: 0.01-0.1 µg/ml
- Immunoprecipitation: 2-5 µg/ml
- IHC: 2-10 µg/ml
- Flow cytometry: Not tested
- Molecular Weight: 75.0
- Positive Control: Kidney Tissue
- Cellular Location: Cell Membrane

FOR RESEARCH USE ONLY.

AbboMax, Inc 2528 Qume Drive, Suite 8, San Jose, California 95131, USA
1 408-573-1898 (Tel). 1 408-573-1858 (Fax). www.abbomax.com info@abbomax.com

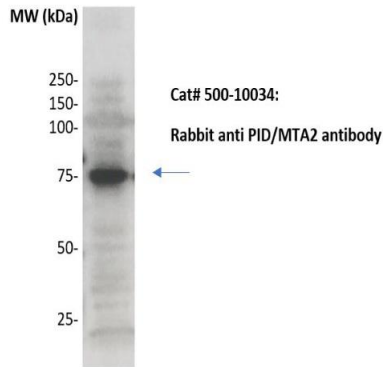


*Optimal dilutions should be determined by researchers for the specific applications.

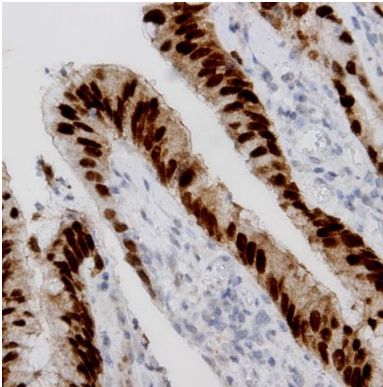
FOR RESEARCH USE ONLY.

AbboMax, Inc 2528 Qume Drive, Suite 8, San Jose, California 95131, USA
1 408-573-1898 (Tel). 1 408-573-1858 (Fax). www.abbomax.com info@abbomax.com

DATA ATTACHMENTS



Western Blot: The whole cell lysate derived from HeLa cell line was probed by rabbit anti-PID/MTA2 (Cat#500-10034) at 1:500 dilutions. Observed a major immunoreactive band at molecular weight ~75kDa.



Immunohistochemistry: Human Colon carcinoma (FFPE) stained with Rabbit anti-PID/MTA2 (Cat# 500-10034) at 1:200 for 10 min @ RT. Staining of formalin-fixed tissue requires boiling tissue sections in 10 mM Citrate Buffer, pH 6.0 for 10 min followed by cooling at RT for 20 min.

REFERENCES

FOR RESEARCH USE ONLY.