

AbboMax, Inc

Innovation at Work

Rabbit anti MEK5 (pSer³¹¹/pThr³¹⁵, Phospho-specific)

Alternate Names: MAPKK5; MEK5; MKK5; MAPK/ERK Kinase 5; SKK5.

Order Information

Description: Rabbit anti-MEK5(pSer³¹¹pThr³¹⁵)
Catalogue#: 620-300
Lot#: See the label
Size: 100 ug/200 ul
Host: Rabbit
Clone: N/A
Application: ELISA, WB
Reactivity: Hu, Rt, Ms, Ck, Dg

ANTIGEN PREPARATION

A synthetic peptide surrounding the epitope –SIAKT- with double phosphorylation sites Ser311 and Thr315. This sequence is identical among human, rat, mouse, chicken, and dog.

BACKGROUND

The MEK5 (also known as MKK5, MAPKK5, SKK5) is a dual specificity serine/threonine protein kinase belonging to the MAP kinase kinase family. It catalyzes tyrosine phosphorylation of ERK5 whereas MEK5 itself is regulated by MEKK3. An important link between MEK5 and metastatic prostate cancer has been demonstrated. Dual phosphorylation of Ser311 and Thr315 have been implicated in cell proliferation.

PURIFICATION

The Rabbit IgG is purified by Site-specific Epitope Affinity Purification.

SPECIFICITY

This antibody recognizes ~49 kDa of human MEK5 protein at the phosphorylation site of Ser 311/Thr315. It does not cross react to non-phospho MEK5. It also reacts with mouse and rat, chicken. The other species are not tested.

FORMULATION

This affinity purified antibody is supplied in sterile Tris-buffered saline (pH7.2) containing antibody stabilizer

STORAGE

The antibodies are stable for 12 months from date of receipt when stored at -20°C to -70°C. The antibodies can be stored at 2°C-8°C for three month without detectable loss of activity. Avoid repeated freezing-thawing cycles.

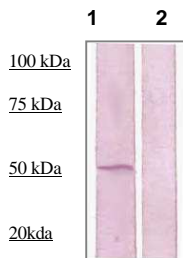
APPLICATIONS/SUGGESTED WORKING DILUTIONS

Western Blot	0.1-1 µg/ml
ELISA	0.01-0.1 µg/ml
Immunoprecipitation	2-5 µg/ml
IHC	2-5 µg/ml
Flow cytometry	Not tested

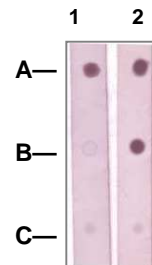
MOLECULAR WEIGHT:	49 kDa
POSITIVE CONTROL:	EGF-stimulated A431
CELLULAR LOCATION:	Cytoplasmic

Optimal dilutions should be determined by researchers for the specific applications.

DATA ATTACHMENTS



Western Blot: The whole cell lysates derived from EGF-stimulated A431 were immunoblotted by Rabbit anti-MEK5(pSer311/pThr315) (Cat#620-300) at 1:1000 (lane 1). The lane 2 was pre-absorbed by immunizing peptide.



Dot Blot:

1 µg peptide was blot onto NC membrane
A: MEK5 (pS311/pT315)
B: MEK5 (Nonphospho);
C: Non-related phosphospecific PP
were blotted at a 1:1000 dilution by:

1: Rabbit anti-MEK5 (pS311/pT315), (Cat#620-300);
2: Rabbit anti-MEK5 (paired 311/315) (Cat#620-310)

REFERENCES

Tetsuro Shishido, et al. Effects of MEK5/ERK5 Association on Small Ubiquitin-Related Modification of ERK5: Implications for Diabetic Ventricular Dysfunction After Myocardial Infarction. *Circulation Research*. 2008; 102:1416.

FOR RESEARCH USE ONLY.

AbboMax, Inc 1161 Ringwood Ct. Suite 100, San Jose, California 95131, USA
1 408-321-9898 (Tel). 1 408-321-9896 (Fax). 1-866-628-9898 www.abbomax.com info@abbomax.com