

AbboMax, Inc

Innovation at Work

Rabbit anti SOX-9 (Paired 181), Non-Phospho-specific

Alternate Names: Sry-related high-mobility group (HMG) box 9

Order Information

Description: Rabbit anti-SOX-9(Paired 181)
Catalogue#: 620-280
Lot#: See the label
Size: 100 ug/200 ul
Host: Rabbit
Clone: N/A
Application: ELISA, WB, IHC
Reactivity: Hu, Rt, Ms, Ck, Bv, Dg

ANTIGEN PREPARATION

A synthetic peptide surrounding the epitope -RKSVK- without phosphorylation. This sequence is identical among human, rat, mouse, bovine, chicken, and dog.

BACKGROUND

The SOX9 is a member of the SOX [Sry-related high-mobility group (HMG) box] family of HMG DNA-binding domain transcription factors and is required for the development and differentiation of multiple cell lineages. SOX9 is expressed in primary prostate cancers *in vivo*, at a higher frequency in recurrent prostate cancer and in prostate cancer cell lines (LNCaP, CWR22, PC3, and DU145). It has been reported that the cAMP/PKA stimulation induces SOX-9 nuclear translocation via facilitating its nuclear import by the phosphorylation of SOX-9 at Ser64 and Ser181. SOX9 in prostate basal cells supports the development and maintenance of the luminal epithelium and that a subset of prostate cancer cells may escape basal cell requirements through SOX9 expression.

PURIFICATION

The Rabbit IgG is purified by Site-specific Epitope Affinity Purification.

SPECIFICITY

This antibody recognizes ~56 kDa of human SOX-9 protein without phosphorylation at S181. It does not recognize the phosphorylation protein at Swe 181. This antibody also reacts with mouse and rat. The other species are not tested.

FORMULATION

This affinity purified antibody is supplied in sterile Tris-buffered saline (pH7.2) containing antibody stabilizer

STORAGE

The antibodies are stable for 12 months from date of receipt when stored at -20°C to -70°C. The antibodies can be stored at 2°C-8°C for three month without detectable loss of activity. Avoid repeated freezing-thawing cycles.

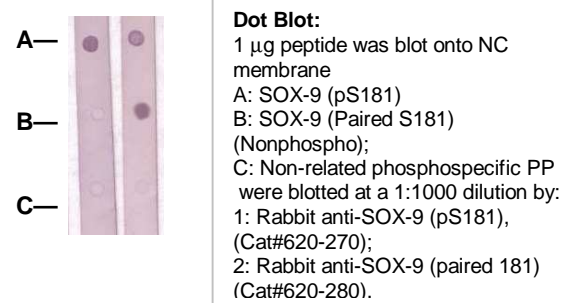
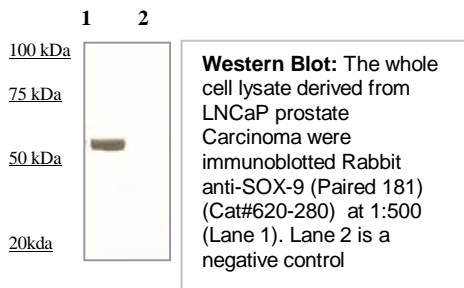
APPLICATIONS/SUGGESTED WORKING DILUTIONS

Western Blot	0.1-1 µg/ml
ELISA	0.01-0.1 µg/ml
Immunoprecipitation	2-5 µg/ml
IHC	2-5 µg/ml
Flow cytometry	Not tested

MOLECULAR WEIGHT:	56 kDa
POSITIVE CONTROL:	LNCaP prostate Ca Cell
CELLULAR LOCATION:	Nuclear

Optimal dilutions should be determined by researchers for the specific applications.

DATA ATTACHMENTS



REFERENCES

Hongyun Wang et al. SOX9 Is Expressed in Normal Prostate Basal Cells and Regulates Androgen Receptor Expression in Prostate Cancer Cells. *Cancer Research* 67, 528-536, January 15, 2007.

FOR RESEARCH USE ONLY.