

AbboMax, Inc

Innovation at Work

Rabbit anti SOX-9 (pSer¹⁸¹), Phospho-specific

Alternate Names: Sry-related high-mobility group (HMG) box 9

Order Information

Description: Rabbit anti-SOX-9(pSer¹⁸¹)
Catalogue#: 620-270
Lot#: See the label
Size: 100 ug/200 ul
Host: Rabbit
Clone: N/A
Application: ELISA, WB, IHC
Reactivity: Hu, Rt, Ms, Ck, Bv, Dg

ANTIGEN PREPARATION

A synthetic peptide surrounding the epitope -RKSVK- with a single phosphorylation site Ser181. This sequence is identical among human, rat, mouse, bovine, chicken, and dog.

BACKGROUND

The SOX9 is a member of the SOX [Sry-related high-mobility group (HMG) box] family of HMG DNA-binding domain transcription factors and is required for the development and differentiation of multiple cell lineages. SOX9 is expressed in primary prostate cancers *in vivo*, at a higher frequency in recurrent prostate cancer and in prostate cancer cell lines (LNCaP, CWR22, PC3, and DU145). It has been reported that the cAMP/PKA stimulation induces SOX-9 nuclear translocation via facilitating its nuclear import by the phosphorylation of SOX-9 at Ser64 and Ser181. SOX9 in prostate basal cells supports the development and maintenance of the luminal epithelium and that a subset of prostate cancer cells may escape basal cell requirements through SOX9 expression.

PURIFICATION

The Rabbit IgG is purified by Site-specific Epitope Affinity Purification.

SPECIFICITY

This antibody recognizes ~56 kDa of human SOX-9 protein at the phosphorylation site of Ser181. It does not cross react to non-phospho SOX-9. It also reacts with mouse and rat. The other species are not tested.

FORMULATION

This affinity purified antibody is supplied in sterile Tris-buffered saline (pH7.2) containing antibody stabilizer

STORAGE

The antibodies are stable for 12 months from date of receipt when stored at -20°C to -70°C. The antibodies can be stored at 2°C-8°C for three month without detectable loss of activity. Avoid repeated freezing-thawing cycles.

APPLICATIONS/SUGGESTED WORKING DILUTIONS

Western Blot	0.1-1 µg/ml
ELISA	0.01-0.1 µg/ml
Immunoprecipitation	2-5 µg/ml
IHC	2-5 µg/ml
Flow cytometry	Not tested

MOLECULAR WEIGHT:	56 kDa
POSITIVE CONTROL:	LNCaP prostate Ca Cell
CELLULAR LOCATION:	Nuclear

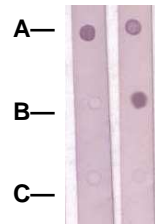
Optimal dilutions should be determined by researchers for the specific applications.

DATA ATTACHMENTS

100 kDa
75 kDa
50 kDa
20kda



Western Blot: The whole cell lysate derived from conditioned LNCaP were immunoblotted Rabbit anti-SOX-9 (pSer181) (Cat#620-270) at 1:500.



Dot Blot:

1 µg peptide was blot onto NC membrane
A: SOX-9 (pS181)
B: SOX-9 (Paired S181) (Nonphospho);
C: Non-related phosphospecific PP were blotted at a 1:1000 dilution by:
1: Rabbit anti-SOX-9 (pS181), (Cat#620-270);
2: Rabbit anti-SOX-9 (paired 181) (Cat#620-280).

REFERENCES

Hongyun Wang et al. SOX9 Is Expressed in Normal Prostate Basal Cells and Regulates Androgen Receptor Expression in Prostate Cancer Cells. *Cancer Research* 67, 528-536, January 15, 2007.

FOR RESEARCH USE ONLY.