

# AbboMax, Inc

Innovation at Work

## Rabbit anti Neurofibromin (Phospho-specific)

Alternate Names: NF1, Neurofibromin-1, 2, 3

### Order Information

Description: Rabbit anti-Neurofibromin  
(Phosphospecific)  
Catalogue#: 620-240  
Lot#: See the label  
Size: 100 ug/200 ul  
Host: Rabbit  
Clone: N/A  
Application: ELISA, WB  
Reactivity: Hu, Rt, Ms, Bv, Dg

### ANTIGEN PREPARATION

A synthetic peptide surrounding the epitope -PTSPY- with a phosphorylation site of Ser2741 of human neurofibromin. This sequence is identical among human, rat, mouse, chicken, bovine and dog.

### BACKGROUND

The neurofibromatosis type 1 (NF1) tumor suppressor (neurofibromin) is thought to play crucial roles in cellular Ras- and cAMP-dependent kinase (PKA)-associated signals. The absence of or alteration of the neurofibromin protein may lead to neurofibromatosis disease. Recently, a cellular neurofibromin-associating protein, NG,NG-dimethylarginine dimethylaminohydrolase (DDAH) has been identified as a cellular NO/NOS regulator which increases PKA phosphorylation of native neurofibromin in a dose-dependent manner. The PKA accessibility of neurofibromin regulated via DDAH interaction may modulate the cellular function of neurofibromin that is implicated in NF1-related pathogenesis.

### PURIFICATION

The Rabbit IgG is purified by Site-specific Epitope Affinity Purification.

### SPECIFICITY

This antibody recognizes ~240 kDa of human neurofibromin protein at the phosphorylation site of Ser 2741. It does not cross react to non-phospho NF1. This antibody also reacts with mouse, rat, chicken, bovine and dog. The other species are not tested.

### FORMULATION

This affinity purified antibody is supplied in sterile Tris-buffered saline (pH7.2) containing antibody stabilizer

### STORAGE

The antibodies are stable for 12 months from date of receipt when stored at -20°C to -70°C. The antibodies can be stored at 2°C-8°C for three month without detectable loss of activity. Avoid repeated freezing-thawing cycles.

### APPLICATIONS/SUGGESTED WORKING DILUTIONS

Western Blot	0.1-1 µg/ml
ELISA	0.01-0.1 µg/ml
Immunoprecipitation	2-5 µg/ml
IHC	Not tested
Flow cytometry	Not tested

<b>MOLECULAR WEIGHT:</b>	240 kDa
<b>POSITIVE CONTROL:</b>	Mouse hypoxic brain
<b>CELLULAR LOCATION:</b>	N/A

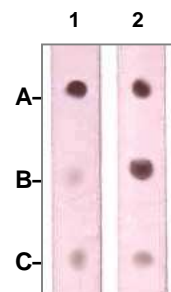
Optimal dilutions should be determined by researchers for the specific applications.

### DATA ATTACHMENTS

200kda  
150kda  
100 kDa  
75 kDa  
60 kDa  
20kda



**Western Blot:** The whole cell lysates derived from hypoxic mouse brain were immunoblotted by Rabbit anti-NF1(pSer2741) (Cat#620-240) at 1:1000



### Dot Blot:

1 µg peptide was blot onto NC membrane  
A: NF1 (pS2741)  
B: NF1 (Nonphospho);  
C: Non-related phosphospecific PP  
were blotted at a 1:1000 dilution by:

1: Rabbit anti-NF1 (p2741), (Cat#620-240);  
2: Rabbit anti-NF1 (paired 2741) (Cat#620-250)

### REFERENCES

Tokuo H. Phosphorylation of neurofibromin by cAMP-dependent protein kinase is regulated via a cellular association of NG,NG-dimethylarginine dimethylaminohydrolase. FEBS Letters, Volume 494, Issue 1 - 2, Pages 48 - 53

**FOR RESEARCH USE ONLY.**

AbboMax, Inc 1161 Ringwood Ct. Suite 100, San Jose, California 95131, USA  
1 408-321-9898 (Tel). 1 408-321-9896 (Fax). 1-866-628-9898 www.abbomax.com info@abbomax.com