

# AbboMax, Inc

Innovation at Work

## Rabbit anti ER (pSer<sup>305</sup>), Phosphospecific

Alternate Names: Estrogen Receptor

### Order Information

Description: Rabbit anti-ER (pSer305)  
(Phosphospecific)  
Catalogue#: 620-220  
Lot#: See the label  
Size: 100 ug/200 ul  
Host: Rabbit  
Clone: N/A  
Application: ELISA, WB  
Reactivity: Hu.

### ANTIGEN PREPARATION

A synthetic peptide surrounding the epitope -KNSLA- with a phosphorylation site of Ser305 of human estrogen receptor.

### BACKGROUND

ER (estrogen receptor) belongs to a member of the steroid receptor superfamily. It contains highly conserved DNA binding (DBD) and ligand binding domains (LBD). Through its estrogen-independent and estrogen-dependent activation domains (AF-1 and AF-2, respectively), ER regulates transcription by its phosphorylation at multiple sites, such as serine 104, 106, 118, 167 and 305. Phosphorylation of certain serine at ER may relate to breast cancer process and on-going treatment.

### PURIFICATION

The Rabbit IgG is purified by Site-specific Epitope Affinity Purification.

### SPECIFICITY

This antibody recognizes ~67 kDa of human estrogen receptor at the phosphorylation site of Ser 305. It does not cross react to non-phosphorylated peptide. This antibody reacts with human. The other species are not tested.

### FORMULATION

This affinity purified antibody is supplied in sterile Tris-buffered saline (pH7.2) containing antibody stabilizer

### STORAGE

The antibodies are stable for 12 months from date of receipt when stored at -20°C to -70°C. The antibodies can be stored at 2°C-8°C for three month without detectable loss of activity. Avoid repeated freezing-thawing cycles.

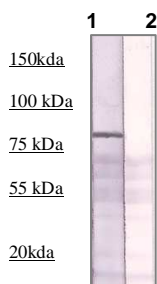
### APPLICATIONS/SUGGESTED WORKING DILUTIONS

Western Blot	0.1-1 µg/ml
ELISA	0.01-0.1 µg/ml
Immunoprecipitation	2-5 µg/ml
IHC	1:200
Flow cytometry	Not tested

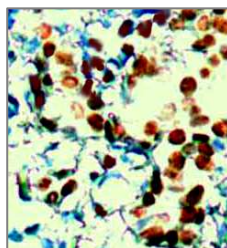
<b>MOLECULAR WEIGHT:</b>	67 kDa
<b>POSITIVE CONTROL:</b>	MCF-7
<b>CELLULAR LOCATION:</b>	Nuclear

Optimal dilutions should be determined by researchers for the specific applications.

### DATA ATTACHMENTS



**Western Blot:** The whole cell lysates derived from MCF-7 were immunoblotted by Rabbit anti-ER (pSer305) (Cat#620-220) at 1:500 (Lane 1). The immunoreactive band is blocked by pre-incubation of immunizing peptide (lane 2)



**IHC:** Human breast cancer tissue stained with Anti-ER (pSer305) antibody, (Cat# 620-2200) at 1:200 for 10 min @ RT. Staining of formalin-fixed tissue requires boiling tissue sections in 10 mM Citrate Buffer, pH 6.0 for 10 min followed by cooling at RT for 20 min.

### REFERENCES

Dutertre M, Smith CL. 2003. Ligand-independent interactions of p160/steroid receptor coactivators and CREB-binding protein (CBP) with estrogen receptor-alpha: regulation by phosphorylation sites in the A/B region depends on other receptor domains. Mol Endocrinol 17:1296-314.

**FOR RESEARCH USE ONLY.**

AbboMax, Inc 1161 Ringwood Ct. Suite 100, San Jose, California 95131, USA  
1 408-321-9898 (Tel). 1 408-321-9896 (Fax). 1-866-628-9898 www.abbomax.com info@abbomax.com