

# AbboMax, Inc

Innovation at Work

## Rabbit anti-Phospho- STAT1 (pTyr<sup>701</sup>)

Synonym: Signal transducer and activator of transcription 1 (STAT1)

### Order Information

Description: Rabbit anti-Phospho-STAT1(pY701)  
Catalogue#: 620-160  
Lot#: See the label  
Size: 100 ug/200 ul  
Host: Rabbit  
Clone: N/A  
Application: ELISA, WB, IHC  
Reactivity: Hu, Rt, Ms.

### ANTIGEN PREPARATION

A synthetic peptide surrounding the epitope -TGYIK-- with phosphorylation sites at Tyr701 of STAT1 protein from human, mouse and rat origins.

### BACKGROUND

STAT proteins (Signal transducer and activator of transcription) belong to a family of cytoplasmic transcription factors that can be phosphorylated by a ligand binding to its cell surface receptor. The phosphorylation of STAT1 at Tyr701 induces STAT1 dimerization, nuclear translocation and DNA binding. STAT 1 is activated by a number of different ligands, including IFN, EGF, PDGF and IL6. Tyrosine 701 phosphorylation impairment results in loss of STAT 1 functions.

### PURIFICATION

The Rabbit IgG is purified by site-modified Epitope Affinity Purification.

### FORMULATION

This affinity purified antibody is supplied in sterile Tris-buffered saline (pH7.2) containing antibody stabilizer

### SPECIFICITY

This antibody recognizes STAT1 (pY701) with a phosphorylated sites of Tyr701. It does not cross-react with non-phosphospecific peptide.

### STORAGE

The antibodies are stable for 12 months from date of receipt when stored at -20°C to -70°C. The antibodies can be stored at 2°C-8°C for three month without detectable loss of activity. Avoid repeated freezing-thawing cycles.

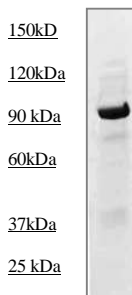
### APPLICATIONS/SUGGESTED WORKING DILUTIONS

Western Blot	0.1-1 µg/ml
ELISA	0.01-0.1 µg/ml
Immunoprecipitation	2-5 µg/ml
IHC	1:50
Flow cytometry	Not tested

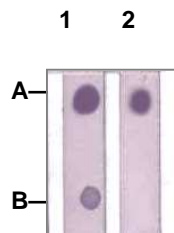
<b>MOLECULAR WEIGHT:</b>	91 kDa
<b>POSITIVE CONTROL:</b>	GH stimulated mouse liver
<b>CELLULAR LOCATION:</b>	Nuclear

Optimal dilutions should be determined by researchers for the specific applications.

### DATA ATTACHMENTS



**Western Blot:** The tissue lysate derived from GH stimulated mouse liver was immunoblotted by Rabbit anti STAT1 (pY701) (Cat#620-160) antibody at 1:500.



#### Dot Blot:

1 µg peptide was blot onto NC membrane

A: STAT1 (pY701) (Phosphospecific)  
B: STAT1 (PairedY701) (Non phosphospecific)

were blotted at a 1:2000 dilution by:  
1: Rabbit anti-STAT1 (Paired Y701) (Cat#620-170),  
2: Rabbit anti-STAT1 (Phospho specific). (Cat#620-160).

### REFERENCES

Tong R Wu, et al. SHP-2 Is a Dual-specificity Phosphatase Involved in Stat1 Dephosphorylation at Both Tyrosine and Serine Residues in Nuclei, J. Biol. Chem., Vol. 277, Issue 49, 47572-47580, December 6, 2002

**FOR RESEARCH USE ONLY.**

AbboMax, Inc 1161 Ringwood Ct. Suite 100, San Jose, California 95131, USA  
1 408-321-9898 (Tel). 1 408-321-9896 (Fax). 1-866-628-9898 www.abbomax.com info@abbomax.com