

AbboMax, Inc

Innovation at Work

Rabbit anti-Phospho- JAK2 (pTyr^{1007/1008})Biotinylated

Synonym: Biotin-conjugated Rabbit anti phosphospecific-Janus Kinase 2

Order Information

Description: Rabbit anti Phospho-JAK2 (pY1007/1008), Biotinylated
Catalogue#: 620-151
Lot#: See the label
Size: 100 ug/200 ul
Host: Rabbit
Clone: N/A
Application: ELISA, WB, IHC
Reactivity: Hu, Rt, Ms.

ANTIGEN PREPARATION

A synthetic peptide surrounding to the epitope -EYYK- with dual phosphorylation sites at Tyr1008 and Tyr1009 of JAK2 from human, mouse and rat origins .

BACKGROUND

The Janus tyrosine kinase family consists of four members, JAK1, JAK2, JAK3 and Tyk2. Upon the cytokine ligand binding to its the receptors, the dimerization of the receptors occurs followed by phosphorylation of the receptors. The phosphorylation of receptors recruits the tyrosine kinase physically associated to the dimerized receptors, and the phosphorylate the kinase, thus activates the signal transducer and activator of transcription (STAT1, 3, 5) and the other signal proteins.

PURIFICATION

The Rabbit IgG is purified by site-modified Epitope Affinity Purification.

SPECIFICITY

This biotinylated antibody recognizes JAK2 with dual phosphorylated sites of Tyr1007/1008. It does not cross-react with non-phosphospecific peptide.

FORMULATION

This affinity purified antibody is supplied in sterile Tris-buffered saline (pH7.2) containing antibody stabilizer

STORAGE

The antibodies are stable for 12 months from date of receipt when stored at -20°C to -70°C. The antibodies can be stored at 2°C-8°C for three month without detectable loss of activity. Avoid repeated freezing-thawing cycles.

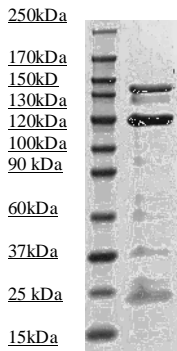
APPLICATIONS/SUGGESTED WORKING DILUTIONS

Western Blot	0.1-1 µg/ml
ELISA	0.01-0.1 µg/ml
Immunoprecipitation	2-5 µg/ml
IHC	1-5 µg/ml
Flow cytometry	Not tested

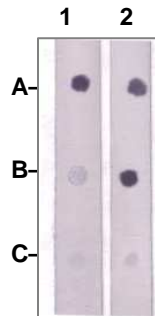
MOLECULAR WEIGHT:	120 kDa (130kDa)
POSITIVE CONTROL:	GH stimulated mouse liver
CELLULAR LOCATION:	Cytoplasmic

Optimal dilutions should be determined by researchers for the specific applications.

DATA ATTACHMENTS



Western Blot: The tissue lysate derived from GH stimulated mouse liver was immunoblotted by Rabbit anti JAK2 (pY1007/pY1008) (Cat#620-150) antibody at 1:500.



Dot Blot:

1 µg peptide was blot onto NC membrane
A: JAK2 (pY1008, pY1009)
B: JAK2 (Non phosphospecific)
C: Non-related Phosphopeptide
were blotted at a 1:2000 dilution by:
1: Rabbit anti-JAK2(pY1008/pY1009), Cat#620-150
2: Rabbit anti-JAK2 (Nonphospho specific).

REFERENCES

Yogev, O., et al. SHP-2 regulates SOCS-1-mediated Janus kinase-2 ubiquitination/degradation downstream of the prolactin receptor. J. Biol. Chem. 278 (52), 52021-52031 (2003)

FOR RESEARCH USE ONLY.

AbboMax, Inc 1161 Ringwood Ct. Suite 100, San Jose, California 95131, USA
1 408-321-9898 (Tel). 1 408-321-9896 (Fax). 1-866-628-9898 www.abbomax.com info@abbomax.com