

AbboMax, Inc

Innovation at Work

Rabbit anti c-Myc tag Polyclonal Antibody

Alternate Names: EQKLISEEDL

Order Information

Description: Rabbit anti-c-Myc -tag
Catalogue#: 610-010
Lot#: See the label
Size: 100 ug/200 ul
Host: Rabbit
Clone: N/A
Application: ELISA, WB, IP
Reactivity: Tag Antibody

ANTIGEN PREPARATION

A synthetic peptide of EQKLISEEDL corresponding to 408-452 aa of the human c-Myc proto-oncogene.

BACKGROUND

Many oligo peptides or tag proteins are widely used as a tag to monitor the protein expression, such as c-Myc, E-tag, His-tag, GFP, GST, and etc. This C-Myc tag antibody can detect the protein expression of the c-Myc tag fused proteins. It provides a tool to localize gene products in a variety of cell types to study the topology of proteins, and protein complexes, and to identify associated proteins. In addition, this antibody allows characterizing of newly identified, lowing abundance or poorly immunogenic proteins when protein specific antibodies are not available.

PURIFICATION

The Rabbit IgG is purified by Epitope-Affinity Chromatography.

SPECIFICITY

This antibody recognizes c-Myc tagged fusion proteins. It is a tag antibody.

FORMULATION

This affinity purified antibody is supplied in sterile Phosphate-buffered saline (pH7.2) containing antibody stabilizer

STORAGE

The antibodies are stable for 12 months from date of receipt when stored at -20°C to -70°C . The antibodies can be stored at 2°C - 8°C for three month without detectable loss of activity. Avoid repeated freezing-thawing cycles.

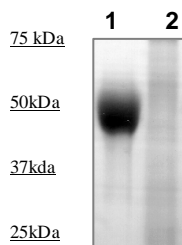
APPLICATIONS/SUGGESTED WORKING DILUTIONS

Western Blot	0.1-1 $\mu\text{g/ml}$
ELISA	0.01-0.1 $\mu\text{g/ml}$
Immunoprecipitation	2-5 $\mu\text{g/ml}$
IHC	Not tested
Flow cytometry	Not tested

MOLECULAR WEIGHT:	N/A
POSITIVE CONTROL:	c-Myc tag fused proteins
CELLULAR LOCATION:	N/A

Optimal dilutions should be determined by researchers for the specific applications.

DATA ATTACHMENTS



Western Blot: The cell lysate of T293 with over-expressed C-Myc tagged recombinant protein was resolved onto 10% SDS-PAGE, then transferred onto NC membrane. Followed by an immune-blotting with Rabbit anti-C-Myc (Cat#610-010) at 1:1000. Lane 2 was pre-incubated by immunizing peptide.

REFERENCES

Campbell, A., et al., J. Biol. Chem., **267**, 9321-9325 (1992).

FOR RESEARCH USE ONLY.

AbboMax, Inc 1161 Ringwood Ct. Suite 100, San Jose, California 95131, USA
1 408-321-9898 (Tel). 1 408-321-9896 (Fax). 1-866-628-9898 www.abbomax.com info@abbomax.com