

AbboMax, Inc

Innovation at Work

Order Information

Description: Mouse anti-ATF3
Catalogue#: 605-070
Lot#: See the label
Size: 100 ug/200 ul
Host: Rabbit
Clone: 4C3A
Application: ELISA, WB
Reactivity: Hu.

Mouse anti-ATF3 Monoclonal Antibody

Synonym: Activating transcription factor 3; Cyclic AMP-dependent transcription factor ATF-3

ANTIGEN PREPARATION

A synthetic peptide corresponding to the Internal sequence of human ATF3.

BACKGROUND

Activating Transcription Factor 3 (ATF3), is a member of mammalian activation TF/CREB protein family of transcription factors. ATF3 binds the cAMP response element (CRE) (consensus: 5'-gtgacgt[ac][ag]-3'), a sequence present in many viral and cellular promoters. However, ATF3 represses rather than activates transcription from promoters with ATF sites stabilizing inhibitory co-factors at the promoter. Alternate splicing forms of ATF3, called ATF3 delta Zip, lack the leucine zipper domain and do not bind DNA. ATF3 delta Zip stimulates transcription, presumably by sequestering inhibitory co-factors away from the promoter. Human ATF3 (SwissProt 18847) is a 20575 Da protein composed of 181 amino acids.

PURIFICATION

The Rabbit IgG is purified by Epitope Affinity Purification.

SPECIFICITY

This antibody recognizes ~21 kDa of human ATF3. The other species are not tested.

FORMULATION

This affinity purified antibody is supplied in sterile phosphate-buffered saline (pH7.2) containing antibody stabilizer

STORAGE

The antibodies are stable for 12 months from date of receipt when stored at -20°C to -70°C. The antibodies can be stored at 2°C-8°C for three month without detectable loss of activity. Avoid repeated freezing-thawing cycles.

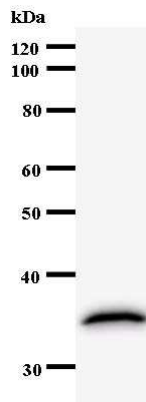
APPLICATIONS/SUGGESTED WORKING DILUTIONS

Western Blot	0.1-1 µg/ml
ELISA	0.01-0.1 µg/ml
Immunoprecipitation	2-5 µg/ml
IHC	Not tested
Flow cytometry	Not tested

MOLECULAR WEIGHT:	~21 kDa
POSITIVE CONTROL:	Human ATF3 recombinant protein
CELLULAR LOCATION:	Nucleus

Optimal dilutions should be determined by researchers for the specific applications.

DATA ATTACHMENTS



Western blot of *E Coli* whole cell extract transfected with GST epitope tagged human ATF3 (50-181aa). The antibody anti-ATF3 (Cat# 605-070) recognizes an immunoreactive protein at ~37 kDa corresponding to the recombinant human ATF3.

REFERENCES

Kool J, Hamdi M, Cornelissen-Steijger P, van der Eb AJ, Terleth C, van Dam H. (2003) Induction of ATF3 by ionizing radiation is mediated via a signaling pathway that includes ATM, Nibrin1, stress-induced MAP kinases and ATF-2. *Oncogene* (2003); 22(27): 4235-42.

FOR RESEARCH USE ONLY.

AbboMax, Inc 1161 Ringwood Ct. Suite 100, San Jose, California 95131, USA
1 408-321-9898 (Tel). 1 408-321-9896 (Fax). 1-866-628-9898 www.abbomax.com info@abbomax.com