

AbboMax, Inc

Innovation at Work

Rabbit anti ROCKII(Paired Thr249), Non-Phospho

Synonym: Rho Kinase; Rho-associated kinase-alpha (ROK α); Rho-associated, coiled-coil containing protein kinase II (ROCKII)

Order Information

Description: Rabbit anti ROCKII(Paired T249)
Non-phosphospecific
Catalogue#: 602-880
Lot#: See the label
Size: 100 ug/200 ul
Host: Rabbit
Clone: N/A
Application: ELISA, WB, IHC
Reactivity: Hu, Rt, Ms, Ck, Dg, Bv

ANTIGEN PREPARATION

A synthetic peptide corresponding to the epitope -CDTAV- without a phosphorylation site Thr396 of human RockII protein. This sequence is identical among human, mouse, rat, chicken, dog and bovine.

BACKGROUND

Rho A-dependent kinase (ROCKII), or ROK-alpha, is identified a serine/threonine kinase, a downstream effector of the small GTPase Rho, mediating effects of Rho on the actin cytoskeleton, formation of actin stress fibers and focal adhesions, ROCKII alters cardiac myofilament response to Ca²⁺ by mechanisms involving phosphorylation of thin filament proteins. ROCK-II induces a depression in maximum ATPase rate and tension, which is associated with phosphorylation of troponin T (TnT), troponin I (TnI), and myosin-binding protein C (C-protein). The phosphorylation of Rho-kinase at Thr 249, Thr 396 plays important role in G-protein signaling..

PURIFICATION

The Rabbit IgG is purified by Site-specific Epitope Affinity Purification.

SPECIFICITY

This antibody recognizes ~165 kDa of human ROCKII without a phosphorylation site of Thr249. It does not react to phosphorylated protein. This antibody also reacts with mouse and rat. The other species are not tested.

FORMULATION

This affinity purified antibody is supplied in sterile Tris-buffered saline (pH7.2) containing antibody stabilizer

STORAGE

The antibodies are stable for 12 months from date of receipt when stored at -20°C to -70°C. The antibodies can be stored at 2°C-8°C for three month without detectable loss of activity. Avoid repeated freezing-thawing cycles.

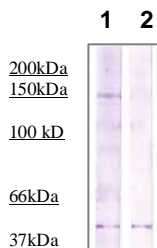
APPLICATIONS/SUGGESTED WORKING DILUTIONS

| | |
|---------------------|---------------------|
| Western Blot | 0.1-1 μ g/ml |
| ELISA | 0.01-0.1 μ g/ml |
| Immunoprecipitation | 2-5 μ g/ml |
| IHC | 0.5-2 μ g/ml |
| Flow cytometry | Not tested |

| | |
|---------------------------|----------|
| MOLECULAR WEIGHT: | 165 kDa |
| POSITIVE CONTROL: | 3T3 cell |
| CELLULAR LOCATION: | N/A |

Optimal dilutions should be determined by researchers for the specific applications.

DATA ATTACHMENTS



Western Blot: The cell lysate derived from 3T3 was immunoprecipitated by Rabbit anti Rho Kinase (Paired T249), (Cat#602-880), then immunoprobed by the same antibody at 1:500 (lane 1). Lane 2 is a negative control.

REFERENCES

Susan Vahebi, et al, Functional Effects of Rho-Kinase-Dependent Phosphorylation of Specific Sites on Cardiac Troponin. *Circulation Research*. 2005;96:740-747.

FOR RESEARCH USE ONLY.