

AbboMax, Inc

Innovation at Work

Order Information

Description: Rabbit anti ROCKII
Catalogue#: 602-850
Lot#: See the label
Size: 100 ug/200 ul
Host: Rabbit
Clone: N/A
Application: ELISA, WB, IHC
Reactivity: Hu, Rt, Ms, Ck Dg, Bv

Rabbit anti ROCKII Polyclonal Antibody

Synonym: Rho Kinase; Rho-associated kinase-alpha (ROK α); Rho-associated, coiled-coil containing protein kinase II (ROCKII)

ANTIGEN PREPARATION

A synthetic peptide (19mer) derived from 250-350 amino acids of human RockII protein. This sequence is identical among human, mouse, rat, chicken, dog and bovine.

BACKGROUND

Rho A-dependent kinase (ROCKII), or ROK-alpha, is identified a serine/threonine kinase, a downstream effector of the small GTPase Rho, mediating effects of Rho on the actin cytoskeleton, formation of actin stress fibers and focal adhesions, ROCKII alters cardiac myofilament response to Ca²⁺ by mechanisms involving phosphorylation of thin filament proteins. ROCK-II induces a depression in maximum ATPase rate and tension, which is associated with phosphorylation of troponin T (TnT), troponin I (TnI), and myosin-binding protein C (C-protein). The phosphorylation of Rho-kinase at Thr 249, Thr 396 plays important role in G-protein signaling..

PURIFICATION

The Rabbit IgG is purified by Epitope Affinity Purification.

SPECIFICITY

This antibody recognizes ~165 kDa of human ROCKII protein. This antibody also reacts with mouse and rat. The other species are not tested.

FORMULATION

This affinity purified antibody is supplied in sterile Phosphate-buffered saline (pH7.2) containing antibody stabilizer

STORAGE

The antibodies are stable for 12 months from date of receipt when stored at -20°C to -70°C. The antibodies can be stored at 2°C-8°C for three month without detectable loss of activity. Avoid repeated freezing-thawing cycles.

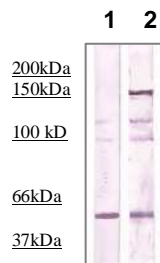
APPLICATIONS/SUGGESTED WORKING DILUTIONS

Western Blot	0.1-1 μ g/ml
ELISA	0.01-0.1 μ g/ml
Immunoprecipitation	2-5 μ g/ml
IHC	0.5-2 μ g/ml
Flow cytometry	Not tested

MOLECULAR WEIGHT:	165 kDa
POSITIVE CONTROL:	3T3 cell
CELLULAR LOCATION:	N/A

Optimal dilutions should be determined by researchers for the specific applications.

DATA ATTACHMENTS



Western Blot: The cell lysate derived from 3T3 was immunoprecipitated by Rabbit anti Rho Kinase, (Cat#602-860), then immunoprobed by the same antibody at 1:500 (lane 2). Lane 1 is a negative control.

REFERENCES

Susan Vahebi, et al, Functional Effects of Rho-Kinase-Dependent Phosphorylation of Specific Sites on Cardiac Troponin. *Circulation Research*. 2005;96:740-747.

FOR RESEARCH USE ONLY.

AbboMax, Inc 1161 Ringwood Ct. Suite 100, San Jose, California 95131, USA
1 408-321-9898 (Tel). 1 408-321-9896 (Fax). 1-866-628-9898 www.abbomax.com info@abbomax.com