

AbboMax, Inc

Innovation at Work

Order Information

Description: Rabbit anti-MMP-7
Catalogue#: 602-830
Lot#: See the label
Size: 100 ug/200 ul
Host: Rabbit
Clone: N/A
Application: ELISA, WB, IHC
Reactivity: Hu.

Rabbit anti MMP-7 Polyclonal Antibody

Alternate Names: Matrix Metalloproteinase 7 (MMP-7); Matrilysin, PUMP-1

ANTIGEN PREPARATION

A synthetic peptide corresponding to the C-terminus of human MMP-7. This sequence is identical among bovine and monkey.

BACKGROUND

Matrix metalloproteinases (MMPs) belong to a family of proteinases that target many extracellular matrix proteins including additional proteinases, growth factors, cell surface receptors and adhesion molecules. MMPs contain common domain structures that include a signal sequence, a propeptide, a catalytic domain, and a hemopexin-like (Hpx) domain. The MMP activity requires proteolytic cleavage of MMPs in order to generate active MMPs by release of the inhibitory propeptide domain from the whole molecules. MMP-2, MMP-3, MMP-7, MMP-9 and MMP-13 have been characterized as important factors for normal tissue remodeling during embryo development and wound healing, tumor invasion, angiogenesis, carcinogenesis and apoptosis. MMP activities are correlated with cancer metastatic process. MMP-7, also known as matrilysin/PUMP-1, plays an important role in hydrolyzing proteoglycans and ECM glycoproteins. It is also expressed in normal cells, specifically glandular epithelial cells. In pancreatic carcinoma, the higher expression of MMP-2, 7 and 11 is observed.

PURIFICATION

The Rabbit IgG is purified by Epitope Affinity Purification.

SPECIFICITY

This antibody recognizes ~30 kDa of human MMP-7 protein. The other species are not tested.

FORMULATION

This affinity purified antibody is supplied in sterile Phosphate buffered saline (pH7.2) containing antibody stabilizer

STORAGE

The antibodies are stable for 12 months from date of receipt when stored at -20°C to -70°C. The antibodies can be stored at 2°C-8°C for three month without detectable loss of activity. Avoid repeated freezing-thawing cycles.

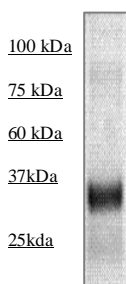
APPLICATIONS/SUGGESTED WORKING DILUTIONS

Western Blot	0.1-1 µg/ml
ELISA	0.01-0.1 µg/ml
Immunoprecipitation	2-5 µg/ml
IHC	2-5 µg/ml
Flow cytometry	Not tested

MOLECULAR WEIGHT:	30 kDa, (18 kDa)
POSITIVE CONTROL:	Conditioned A431
CELLULAR LOCATION:	Cytoplasmic and extracellular matrix

Optimal dilutions should be determined by researchers for the specific applications.

DATA ATTACHMENTS



Western Blot: The protein derived from the whole cell lysate of APMA stimulated A431 was resolved onto 12% SDS-PAGE, transferred to NC membrane, followed by an immunoblotting with Rabbit anti-MMP-7 (Cat#602-830) at 1:1000.

REFERENCES

Nick Di Girolamo et al. Active Matrilysin (MMP-7) in Human Pterygia: Potential Role in Angiogenesis. *Investigative Ophthalmology and Visual Science*. 2001;42:1963-1968.

FOR RESEARCH USE ONLY.

AbboMax, Inc 1161 Ringwood Ct. Suite 100, San Jose, California 95131, USA
1 408-321-9898 (Tel). 1 408-321-9896 (Fax). 1-866-628-9898 www.abbomax.com info@abbomax.com