

# AbboMax, Inc

Innovation at Work

## Rabbit anti IRS-2(Paired S731) Antibody

Synonym: Insulin-receptor substrate 2 (IRS-2).

### Order Information

Description: Rabbit anti IRS-2(Paired731)  
Catalogue#: 602-630  
Lot#: See the label  
Size: 100 ug/200 ul  
Host: Rabbit  
Clone: N/A  
Application: ELISA, WB, IHC  
Reactivity: Hu, Rt, Ms

### ANTIGEN PREPARATION

A synthetic peptide corresponding to the epitope ASSPA without phosphorylation site Ser 731 of human IRS-2.

### BACKGROUND

Insulin Receptor Substrate-2 (IRS-2), a 180kDa cytoplasmic docking protein, is one of the major endogenous substrates of the insulin receptor kinase. The insulin receptor mediates insulin action through the phosphorylation of substrate proteins. The major substrates of the insulin receptor kinase are the insulin receptor substrate (IRS) family of proteins, IRS 1, IRS 2, IRS 3, and IRS 4. IRS 2, a signaling molecule that mediates effects of insulin, Insulin-like growth factor 1 and other cytokines by acting as a molecular adaptor between diverse receptor kinases and downstream effectors. IRS proteins contain more than 70 potential Ser / Thr phosphorylation sites for kinases like PKA (cAMP-dependent protein kinase), PKC, and MAPK. The phosphorylation of Ser / Thr residues of IRS proteins has a dual function, serving either for a positive or negative modulation of insulin signal transduction.

### PURIFICATION

The Rabbit IgG is purified by Site-specific Epitope Affinity Purification.

### SPECIFICITY

This antibody recognizes ~180 kDa of human IRS-2. It also reacts with mouse and rat. The other species are not tested.

### FORMULATION

This affinity purified antibody is supplied in sterile Tris-buffered saline (pH7.2) containing antibody stabilizer

### STORAGE

The antibodies are stable for 12 months from date of receipt when stored at  $-20^{\circ}\text{C}$  to  $-70^{\circ}\text{C}$ . The antibodies can be stored at  $2^{\circ}\text{C}$ - $8^{\circ}\text{C}$  for three month without detectable loss of activity. Avoid repeated freezing-thawing cycles.

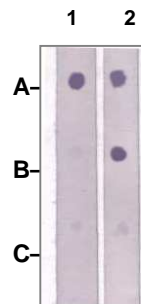
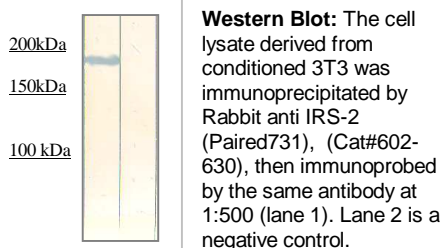
### APPLICATIONS/SUGGESTED WORKING DILUTIONS

Western Blot	0.1-1 $\mu\text{g/ml}$
ELISA	0.01-0.1 $\mu\text{g/ml}$
Immunoprecipitation	2-5 $\mu\text{g/ml}$
IHC	0.5-2 $\mu\text{g/ml}$
Flow cytometry	Not tested

<b>MOLECULAR WEIGHT:</b>	180 kDa
<b>POSITIVE CONTROL:</b>	3T3 cell lysate
<b>CELLULAR LOCATION:</b>	N/A

Optimal dilutions should be determined by researchers for the specific applications.

### DATA ATTACHMENTS



**Dot Blot:**  
1  $\mu\text{g}$  peptide was blot onto NC membrane  
A: IRS-2(pS731)  
B: IRS-2(non phosphorylated)  
C: Non-related Phosphopeptide)  
Followed by rabbit antibodies incubation at a 1:1000 dilution:  
1: Rabbit anti-IRS-2(pS731) (Cat#500-9004)  
2: Rabbit anti-IRS-2(Paired S731) Cat# (602-630)

### REFERENCES

Li, Y. et al. (2004) J. Biol. Chem. 279, 45304-45307.

**FOR RESEARCH USE ONLY.**

AbboMax, Inc 1161 Ringwood Ct. Suite 100, San Jose, California 95131, USA  
1 408-321-9898 (Tel). 1 408-321-9896 (Fax). 1-866-628-9898 www.abbomax.com info@abbomax.com