

AbboMax, Inc

Innovation at Work

Rabbit anti RCAS1 Antibody

Alternate Names: Receptor-binding cancer antigen expressed on SiSo cells)
EBAG9 (Estrogen receptor-binding fragment associated antigen 9)

Order Information

Description: Rabbit anti RCAS1
Catalogue#: 602-610
Lot#: See the label
Size: 100 ug/200 ul
Host: Rabbit
Clone: N/A
Application: ELISA, WB, IHC
Reactivity: Hu, Ms, Rt, Bv, Dg

ANTIGEN PREPARATION

A synthetic peptide corresponding to the C-terminus of human RCAS1 protein, this sequence is identical to mouse, bovine, dog.

BACKGROUND

The tumor associated antigen RCAS1, Receptor binding cancer antigen expressed on SiSo cells, or EBAG9, is a type II membrane protein, expressed on human cancer cells of uterus as well as digestive and respiratory tract. RCAS1 immunoreactivity can be detected in the membrane and cytoplasm of tumor cells. The expression of RCAS1 significantly correlated with the histological type of carcinoma and lymph node metastasis. The expression of RCAS1 is significantly correlated with poor prognosis in patients with T3 gastric carcinoma. RCAS1 protein may play an important role in the evasion of tumor cells from immunological defense mechanisms in human gastric carcinoma.

PURIFICATION

The Rabbit IgG is purified by Epitope Affinity Purification.

SPECIFICITY

This antibody recognizes ~32 kDa RCAS1 protein from human. The other species are not tested

FORMULATION

This affinity purified antibody is supplied in sterile Phosphate-buffered saline (pH7.2) containing antibody stabilizer

STORAGE

The antibodies are stable for 12 months from date of receipt when stored at -20°C to -70°C. The antibodies can be stored at 2°C-8°C for three month without detectable loss of activity. Avoid repeated freezing-thawing cycles.

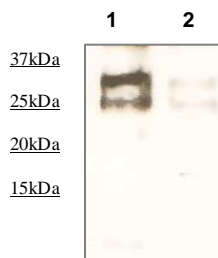
APPLICATIONS/SUGGESTED WORKING DILUTIONS

Western Blot	0.1-1 µg/ml
ELISA	0.01-0.1 µg/ml
Immunoprecipitation	2-5 µg/ml
IHC	Not tested
Flow cytometry	Not tested

MOLECULAR WEIGHT:	32kDa (membrane bound form), 25kDa (cellular form) kDa
POSITIVE CONTROL:	Human liver tissue lysate
CELLULAR LOCATION:	Membrane and cytoplasm

Optimal dilutions should be determined by researchers for the specific applications.

DATA ATTACHMENTS



Western Blot: The tissue lysate derived from human liver tissue lysate was immunoprobed by Rabbit anti-RCAS1 (Cat#602-610) at 1:500. An immunoreactive band is observed around ~32 kDa (1). The lane 2 is a negative control.

REFERENCES:

Kenji Fukuda, et al. The expression of RCAS1 and tumor infiltrating lymphocytes in patients with T3 gastric carcinoma. Gastric Cancer, 5(4), P220-227 (2002).

FOR RESEARCH USE ONLY.

AbboMax, Inc 1161 Ringwood Ct. Suite 100, San Jose, California 95131, USA
1 408-321-9898 (Tel). 1 408-321-9896 (Fax). 1-866-628-9898 www.abbomax.com info@abbomax.com