

# AbboMax, Inc

Innovation at Work

## Rabbit anti LRRK2 Antibody

Alternate Names: Leucine-Rich Repeat Kinase 2; PARK8, ROCO2, Dardarin, BC300-267, Parkinson disease (autosomal dominant) 8

### ANTIGEN PREPARATION

A synthetic peptide corresponding to C-terminus of human LRRK2.

### BACKGROUND

The leucine-rich repeat kinase family (LRKK) proteins are consists of an ankryin repeat region, a leucine-rich repeat (LRR) domain, a kinase domain, a DFG-like motif, a RAS domain, a GTPase domain, a MLK-like domain, and a WD40. Various genes and loci ( $\alpha$ -synuclein/PARK1 and 4, parkin/PARK2, UCH-L1/PARK5, PINK1/PARK6, DJ-1/PARK7, LRRK2/PARK8, synphilin-1 and NR4A2) are associated to Parkinson's Disease (PD). LRRK2 may play an important role as a therapeutic target for treatment of PD (5).

### PURIFICATION

The Rabbit IgG is purified by Epitope Affinity Purification.

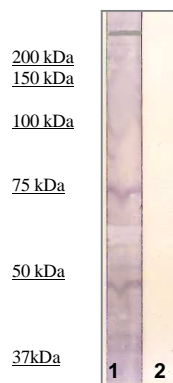
### SPECIFICITY

This antibody recognizes ~285 kDa of human LRRK2 protein. The other species are not tested

### APPLICATIONS/SUGGESTED WORKING DILUTIONS

Western Blot	0.1-1 $\mu$ g/ml
ELISA	0.01-0.1 $\mu$ g/ml
Immunoprecipitation	2-5 $\mu$ g/ml
IHC	Not tested
Flow cytometry	Not tested

### DATA ATTACHMENTS



**Western Blot:** The cell lysate derived from 3T3 was immunoprobed by Rabbit anti-LRRK2 (Cat#602-570) at 1:500. An immunoreactive band is observed around ~285 kDa (1). This band is abolished by pre-incubation with immunizing peptide (2).

### REFERENCES:

Melrose, HL, et al. A comparative analysis of leucine-rich repeat kinase 2 (LRRK2) expression in mouse brain and Lewy Body disease. Neurosci. 147: 1047-1058 (2007)

### Order Information

Description: Rabbit anti LRRK2  
Catalogue#: 602-570  
Lot#: See the label  
Size: 100  $\mu$ g/200  $\mu$ l  
Host: Rabbit  
Clone: N/A  
Application: ELISA, WB, IHC  
Reactivity: Hu

### FORMULATION

This affinity purified antibody is supplied in sterile Phosphate-buffered saline (pH7.2) containing antibody stabilizer

### STORAGE

The antibodies are stable for 12 months from date of receipt when stored at  $-20^{\circ}\text{C}$  to  $-70^{\circ}\text{C}$ . The antibodies can be stored at  $2^{\circ}\text{C}$ - $8^{\circ}\text{C}$  for three month without detectable loss of activity. Avoid repeated freezing-thawing cycles.

<b>MOLECULAR WEIGHT:</b>	285 kDa
<b>POSITIVE CONTROL:</b>	LRRK2 Transfected HEK293 cell lysate
<b>CELLULAR LOCATION:</b>	N/A

Optimal dilutions should be determined by researchers for the specific applications.

**FOR RESEARCH USE ONLY.**