

AbboMax, Inc

Innovation at Work

Rabbit anti-Phospho- ERK1/2(pThr²⁰²/pTyr²⁰⁴)

Synonym: Extracellular signal-regulated kinase, ERK1;

Mitogen activated protein kinase 3; MAPK3; p44/42 MAPK; ERK/MAPK

Order Information

Description: Rabbit anti -p56lck (pY505)
Phosphospecific
Catalogue#: 602-340
Lot#: See the label
Size: 100 ug/200 ul
Host: Rabbit
Clone: N/A
Application: ELISA, WB, IHC
Reactivity: Hu, Rt, Ms, Bv, Dg

ANTIGEN PREPARATION

A synthetic peptide derived from Carboxyl-terminus of p56^{lck} protein with a phosphorylation site at Tyr 505 from human, rat, bovine, dog origin.

BACKGROUND

Lymphocyte specific protein tyrosine kinase (LCK) belongs to Src family protein-tyrosine kinase. It is essential for T-cell development and function. The activity p56^{lck} is regulated by phosphorylation and dephosphorylation of two critical tyrosine residues Tyr394 and Tyr505. Tyr394 and Tyr505 are autophosphorylated after p56^{lck} activation, whereas phosphorylation of Tyr505 is believed to be due to p50^{csk} which negatively modulates P56^{lck} activity. Autophosphorylation at Tyr505 of P56^{lck} may represent an accessory mechanism for the down-regulation of the tyrosine kinase activity of P56^{lck}.

PURIFICATION

The Rabbit IgG is purified by site-modified Epitope Affinity Purification.

SPECIFICITY

This antibody recognizes p56^{lck} with a phosphorylated site of Tyrosine 505. It does not cross-react with non-phosphospecific peptide.

FORMULATION

This affinity purified antibody is supplied in sterile Tris-buffered saline (pH7.2) containing antibody stabilizer

STORAGE

The antibodies are stable for 12 months from date of receipt when stored at -20°C to -70°C. The antibodies can be stored at 2°C-8°C for three month without detectable loss of activity. Avoid repeated freezing-thawing cycles.

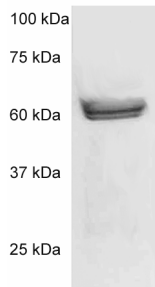
APPLICATIONS/SUGGESTED WORKING DILUTIONS

Western Blot	0.1-1 µg/ml
ELISA	0.01-0.1 µg/ml
Immunoprecipitation	2-5 µg/ml
IHC	Not tested
Flow cytometry	Not tested

MOLECULAR WEIGHT:	60 kDa
POSITIVE CONTROL:	Serum starved Jurkat cells
CELLULAR LOCATION:	Cytoplasmic

Optimal dilutions should be determined by researchers for the specific applications.

DATA ATTACHMENTS



Western Blot: The whole cell lysate derived from serum starved Jurkat was separated in 10% SDS-PAGE, transferred onto NC membrane, and immunoblotted by Rabbit anti - p56lck (pY505) (Cat#602-340) antibody at 1:500. An immunoreactive band around ~60 kDa is observed.

REFERENCES

Ngozi Monu et al. Suppression of Proximal T Cell Receptor Signaling and Lytic Function in CD8⁺ Tumor-Infiltrating T Cells. Cancer Res 2007; 67(23):11447-54.

FOR RESEARCH USE ONLY.

AbboMax, Inc 1161 Ringwood Ct. Suite 100, San Jose, California 95131, USA
1 408-321-9898 (Tel). 1 408-321-9896 (Fax). 1-866-628-9898 www.abbomax.com info@abbomax.com