

AbboMax, Inc

Innovation at Work

Rabbit anti-ERK1/2(PairedT202/Y204), Non-phospho

Synonym: Extracellular signal-regulated kinase, ERK1;

Mitogen activated protein kinase 3; MAPK3; p44/42 MAPK; ERK/MAPK

Order Information

Description: Rabbit anti -ERK1/2
(Paired T202pY204) Non-Phosphospecific
Catalogue#: 602-320
Lot#: See the label
Size: 100 ug/200 ul
Host: Rabbit
Clone: N/A
Application: ELISA, WB, IHC
Reactivity: Hu, Rt, Ms, Dg

ANTIGEN PREPARATION

A synthetic peptide derived from epitope -LTEYV- without the dual phosphorylation sites Thr202 and Tyr204 of ERK1/2 protein from human, rat, mouse and dog origins.

BACKGROUND

The extracellular signal-regulated kinases 1/2 (ERK1/2) are also known as MAPK (Mitogen-activated protein kinases) are a widely conserved family of serine/threonine protein kinases involved in many cellular programs such as cell proliferation, differentiation, motility, and death. The p44/42 MAPK (ERK1/2) signaling pathway can be activated in response to a diverse range of extracellular stimuli including mitogens, growth factors, and cytokines and is an important target in the diagnosis and treatment of cancer. The phosphorylation of MAPK at Thr202 and Tyr 204 are correlated to the progression and metastatic potential of tumor cells.

PURIFICATION

The Rabbit IgG is purified by site-modified Epitope Affinity Purification.

SPECIFICITY

This antibody recognizes ERK1/2 **without** the dual phosphorylation sites Thr202 and Tyr 204. It does not cross-react with Phosphospecific peptide.

FORMULATION

This affinity purified antibody is supplied in sterile Phosphate-buffered saline (pH7.2) containing antibody stabilizer

STORAGE

The antibodies are stable for 12 months from date of receipt when stored at -20°C to -70°C. The antibodies can be stored at 2°C-8°C for three month without detectable loss of activity. Avoid repeated freezing-thawing cycles.

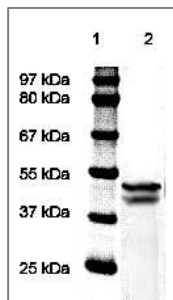
APPLICATIONS/SUGGESTED WORKING DILUTIONS

Western Blot	0.1-1 µg/ml
ELISA	0.01-0.1 µg/ml
Immunoprecipitation	2-5 µg/ml
IHC	Not tested
Flow cytometry	Not tested

MOLECULAR WEIGHT:	42/44 kDa
POSITIVE CONTROL:	3T3 cells
CELLULAR LOCATION:	Cytoplasmic

Optimal dilutions should be determined by researchers for the specific applications.

DATA ATTACHMENTS



Western Blot: The whole cell lysate derived from 3T3 was separated in 10% SDS-PAGE, transferred onto NC membrane, and immunoblotted by Rabbit anti - ERK1/2 (Paired T202/Y204) (Cat#602-320) antibody at 1:500. A dual immunoreactive band around ~42/44 kDa is observed.

REFERENCES

M. Klink, et al. Ovarian Cancer Cells Modulate Human Blood Neutrophils Response to Activation In Vitro. Clinical Immunology, 68 (3), 328-336. 2008.

FOR RESEARCH USE ONLY.

AbboMax, Inc 1161 Ringwood Ct. Suite 100, San Jose, California 95131, USA
1 408-321-9898 (Tel). 1 408-321-9896 (Fax). 1-866-628-9898 www.abbomax.com info@abbomax.com