

AbboMax, Inc

Innovation at Work

Rabbit anti Desmin Polyclonal Antibody

Alternate Names: Desmin

ANTIGEN PREPARATION

A synthetic peptide corresponding to the C-terminus of human Desmin.

BACKGROUND

Desmin is a major intermediate filament protein found exclusively in striated (skeletal or cardiac) muscle tissue. It belongs to a large family of class III intermediate filament protein, the main intermediate filamentin mature skeletal, cardiac and smooth muscle cells. Mutations in the gene encoding desmin are associated with desmin-related myopathy, a familial cardiac and skeletal myopathy (CSM), and with distal myopathies. PKC (Protein Kinase C) and cAMP-dependent protein kinase can induce disassembly of the desmin filaments by phosphorylating multiple sites at N-terminus of desmin which can affect the desmin filament structure which play a role in the regulatory process in assembly and turnover.

PURIFICATION

The Rabbit IgG is purified by Site-specific Epitope Affinity Purification.

SPECIFICITY

This antibody recognizes ~55 kDa of human Desmin protein. It also react with mouse and rat. The other species are not tested.

APPLICATIONS/SUGGESTED WORKING DILUTIONS

Western Blot	0.1-1 µg/ml
ELISA	0.01-0.1 µg/ml
Immunoprecipitation	2-5 µg/ml
IHC	2-5 µg/ml
Flow cytometry	Not tested

FORMULATION

This affinity purified antibody is supplied in sterile Phosphate-buffered saline (pH7.2) containing antibody stabilizer.

STORAGE

The antibodies are stable for 12 months from date of receipt when stored at -20°C to -70°C. The antibodies can be stored at 2°C-8°C for three month without detectable loss of activity. Avoid repeated freezing-thawing cycles.

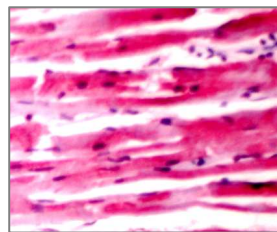
MOLECULAR WEIGHT:	~55 kDa
POSITIVE CONTROL:	Cardiac Myocyte
CELLULAR LOCATION:	Cytoplasmic and membrane

Optimal dilutions should be determined by researchers for the specific applications.

DATA ATTACHMENTS



WB: The whole cell lysate derived from cardiac myocytes was loaded in 10% SDS-PAGE, transferred onto NC membrane, and immune-probed by Rabbit anti-Desmin (Cat#602-300) at 1:500. An immune-reactive band is observed around ~55kDa.



IHC: Human heart tissue stained with Anti-Desmin antibody, (Cat# 602-300) at 1:200 for 10 min @ RT. Staining of formalin-fixed tissue requires boiling tissue sections in 10 mM Citrate Buffer, pH 6.0 for 10 min followed by cooling at RT for 20 min.

REFERENCES:

Xupei Huang, et al. Protein Kinase C-Mediated Desmin Phosphorylation Is Related to Myofibril Disarray in Cardiomyopathic Hamster Heart. *Experimental Biology and Medicine* 227:1039-1046 (2002).

S Kitamura, et al. Protein kinase C phosphorylation of desmin at four serine residues within the non-alpha-helical head domain. *J. Biol. Chem.*, Vol. 264 (10), 5674-5678 (1989).

FOR RESEARCH USE ONLY.

Order Information

Description: Rabbit anti -Desmin
Catalogue#: 602-300
Lot#: See the label
Size: 100 µg/200 ul
Host: Rabbit
Clone: N/A
Application: ELISA, WB, IHC
Reactivity: Hu, Ms, Rt