

# AbboMax, Inc

Innovation at Work

## Rabbit anti-STAT5 (PairedY694) (Non-phosphospecific)

Synonym: Signal transducer and activator of transcription 5 (STAT5)

### Order Information

Description: Rabbit anti -STAT5(Paired Y694)  
Catalogue#: 602-140  
Lot#: See the label  
Size: 100 ug/200 ul  
Host: Rabbit  
Clone: N/A  
Application: ELISA, WB, IHC  
Reactivity: Hu, Rt, Ms, Bv, Dg.

### ANTIGEN PREPARATION

A synthetic peptide surrounding to the epitope -DGYVK-- without phosphorylation sites at Tyr694 of STAT5 protein from human, mouse and rat origins.

### BACKGROUND

STAT proteins (Signal transducer and activator of transcription) belong to a family of cytoplasmic transcription factors that can be phosphorylated by a ligand binding to its cell surface receptor. STAT5 is tyrosine phosphorylated in response to IL-2, IL-3, IL-7, IL-15, GM-CSF, growth hormone, prolactin, erythropoietin and thrombopoietin. Serine phosphorylation is also required for maximal transcriptional activity. NCoA-1/SRC-1 acts as a co-activator for both the  $\alpha$ - and  $\beta$ -isoforms of STAT5.

### PURIFICATION

The Rabbit IgG is purified by site-modified Epitope Affinity Purification.

### SPECIFICITY

This antibody recognizes STAT5 without a phosphorylated sites of Tyr694. It does not cross-react with phosphospecific peptide.

### FORMULATION

This affinity purified antibody is supplied in sterile Tris-buffered saline (pH7.2) containing antibody stabilizer

### STORAGE

The antibodies are stable for 12 months from date of receipt when stored at  $-20^{\circ}\text{C}$  to  $-70^{\circ}\text{C}$ . The antibodies can be stored at  $2^{\circ}\text{C}$ - $8^{\circ}\text{C}$  for three month without detectable loss of activity. Avoid repeated freezing-thawing cycles.

### APPLICATIONS/SUGGESTED WORKING DILUTIONS

Western Blot	0.1-1 $\mu\text{g/ml}$
ELISA	0.01-0.1 $\mu\text{g/ml}$
Immunoprecipitation	2-5 $\mu\text{g/ml}$
IHC	1:100
Flow cytometry	Not tested

<b>MOLECULAR WEIGHT:</b>	92 kDa
<b>POSITIVE CONTROL:</b>	Mouse liver
<b>CELLULAR LOCATION:</b>	Nuclear

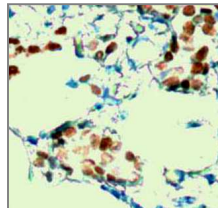
Optimal dilutions should be determined by researchers for the specific applications.

### DATA ATTACHMENTS

150kD  
120kDa  
90 kDa  
60kDa  
37kDa  
20kDa



**Western Blot:** The tissue lysate derived from mouse liver was immunoblotted by Rabbit anti STAT5 (Paired Y694) (Cat#602-140) antibody at 1:500



**IHC:** Human breast carcinoma tissue stained with Anti-STAT5 (Paired Y694) (Cat#602-140) antibody at 1:100 for 10 min @ RT. Staining of formalin-fixed tissue requires boiling tissue sections in 10 mM Citrate Buffer, pH 6.0 for 10 min followed by cooling at RT for 20 min.

### REFERENCES

Lin, J.X., et al. Cloning of human Stat5B. Reconstitution of interleukin-2-induced Stat5A and Stat5B DNA binding activity in COS-7 cells. J. Biol Chem. 271: 10738, 2006

### FOR RESEARCH USE ONLY.

AbboMax, Inc 1161 Ringwood Ct. Suite 100, San Jose, California 95131, USA  
1 408-321-9898 (Tel). 1 408-321-9896 (Fax). 1-866-628-9898 www.abbomax.com info@abbomax.com