

# AbboMax, Inc

Innovation at Work

## Rabbit anti Phospho-CSF-1R/M-CSFR (pTyr<sup>723</sup>)

Alternate Names: Colony stimulating factor 1R (CSF-1R);  
Macrophage colony stimulating factor receptor (M-CSFR); CD115; C-FMS.

### Order Information

Description: Rabbit anti CSF-1R (pY723)  
Catalogue#: 602-110  
Lot#: See the label  
Size: 100 ug/200 ul  
Host: Rabbit  
Clone: N/A  
Application: ELISA, WB, IHC  
Reactivity: Hu, Rt, Ms, By

### ANTIGEN PREPARATION

A synthetic peptide corresponding to the epitope -DTYVEM- at a phosphorylation site at tyrosine 723 of human CSF-1R protein. This sequence is identical within human, mouse, rat, and bovine.

### BACKGROUND

CD115, or Colony-stimulating factor-1 receptor (CSF-1R), is the major regulator of macrophage development and associated with epithelial cancers of the breast and ovary. CSF-1R is a disulfide-linked homodimer, which upon binding of its ligand, CSF-1, undergoes tyrosine autophosphorylation and subsequently, phosphorylates other membrane-proximal downstream targets which results in cytoskeletal remodeling, gene transcription and protein translation. The activated or phosphorylated form of CSF-1R has been associated with enhanced invasive and metastatic potential. The phosphorylation residues include Tyr 708, Tyr 723, Tyr 809 which correlate CSF-1R expression with changes in the growth and development of the cancer stage.

### PURIFICATION

The Rabbit IgG is purified by Site-specific Epitope Affinity Purification.

### SPECIFICITY

This antibody recognizes ~150 kDa of human CSF-1R protein at a phosphorylation site of Tyrosine 723. It does not recognize non-phosphorylated peptides. This antibody also reacts with mouse. The other species are not tested.

### FORMULATION

This affinity purified antibody is supplied in sterile Tris-buffered saline (pH7.2) containing antibody stabilizer

### STORAGE

The antibodies are stable for 12 months from date of receipt when stored at -20°C to -70°C. The antibodies can be stored at 2°C-8°C for three month without detectable loss of activity. Avoid repeated freezing-thawing cycles.

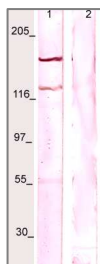
### APPLICATIONS/SUGGESTED WORKING DILUTIONS

Western Blot	0.1-1 µg/ml
ELISA	0.01-0.1 µg/ml
Immunoprecipitation	2-5 µg/ml
IHC	2-5 µg/ml
Flow cytometry	Not tested

<b>MOLECULAR WEIGHT:</b>	~150 kDa (Phosphorylated form)
<b>POSITIVE CONTROL:</b>	LNCaP
<b>CELLULAR LOCATION:</b>	Membrane

Optimal dilutions should be determined by researchers for the specific applications.

### DATA ATTACHMENTS



**WB:** The whole cell lysate derived from m-CSF stimulated LNCaP was immunoblotted by Rabbit anti-CSF-1R (pY723) (Cat#602-110) at 1:500. A major immune-reactive band is observed around ~150kDa (lane 1). This band is blocked by pre-incubation of immunizing peptide (lane 2)

### REFERENCES:

Eugene P. Toy et al. The Activated Macrophage Colony-Stimulating Factor (CSF-1) Receptor as a Predictor of Poor Outcome in Advanced Epithelial Ovarian Carcinoma. (2001) Gynecologic Oncology, 80 (2), 194-200.

**FOR RESEARCH USE ONLY.**

AbboMax, Inc 1161 Ringwood Ct. Suite 100, San Jose, California 95131, USA  
1 408-321-9898 (Tel). 1 408-321-9896 (Fax). 1-866-628-9898 www.abbomax.com info@abbomax.com