

AbboMax, Inc

Innovation at Work

Order Information

Description: Rabbit anti- β -Catenin (Paired 280)
Catalogue#: 602-070
Lot#: See the label
Size: 100 μ g/200 μ l
Host: Rabbit
Clone: N/A
Application: ELISA, WB, IHC
Reactivity: Hu. Rt. Ms. Ck. Cn

Rabbit anti β -Catenin (Paired280) Antibody

ANTIGEN PREPARATION

A synthetic peptide corresponding to the epitope EPYGL without phosphorylation of human β -catenin.

BACKGROUND

Beta-catenin is a cytosolic, 88 kDa, 781 amino acid protein belongs to the β -catenin family. The N-terminus domain, containing the binding site and the phosphorylation sites. Beta-Catenin serves as a link between cytoskeleton actin and transmembrane cadherin(s). It is believed to contribute to tight cell-to-cell adhesion. It can enter the nucleus and interact with the TCF/LEF family of transcription factors, initiating gene expression. Normally, β -catenin transcriptional activity is suppressed by a Ser/Thr kinase termed GSK3 β and/or Casein Kinase I (CK1). Kinases are constitutively active and phosphorylates β -catenin at multiple sites, including S33 and S37, Y96, Y228, Y280 etc. Phosphorylation of β -catenin targets the molecule for degradation via a ubiquitination-mediated pathway. GSK3 β activity can be blocked by upstream signaling events such as Wnt-Frizzled interaction. This inhibits GSK3 β , allowing unphosphorylated β -catenin to enter the nucleus and initiate gene activation. The phosphorylation of beta-catenin might contribute to tumorigenesis.

PURIFICATION

The Rabbit IgG is purified by Site-specific Epitope Affinity Purification.

SPECIFICITY

This antibody recognizes ~88 kDa of human beta-Catenin protein. It also reacts with mouse and rat. The other species are not tested.

FORMULATION

This affinity purified antibody is supplied in sterile Tris-buffered saline (pH7.2) containing antibody stabilizer

STORAGE

The antibodies are stable for 12 months from date of receipt when stored at -20°C to -70°C . The antibodies can be stored at 2°C - 8°C for three month without detectable loss of activity. Avoid repeated freezing-thawing cycles.

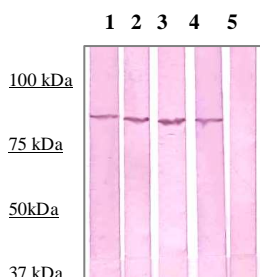
APPLICATIONS/SUGGESTED WORKING DILUTIONS

Western Blot	0.1-1 μ g/ml
ELISA	0.01-0.1 μ g/ml
Immunoprecipitation	2-5 μ g/ml
IHC	2-5 μ g/ml
Flow cytometry	Not tested

MOLECULAR WEIGHT:	88 kDa
POSITIVE CONTROL:	HELA cell lysate
CELLULAR LOCATION:	N/A

Optimal dilutions should be determined by researchers for the specific applications.

DATA ATTACHMENTS



Western Blot: The cell lysate derived from HELA was immunoprobed at a dilution of 1:500 by the following antibodies:
1: Rabbit anti-beta-Catenin (pY228) (Cat#602-040)
2: Rabbit anti-beta-Catenin (paired 228) (Cat#602-050)
3: Rabbit anti-beta-Catenin (pY280) (Cat#602-060)
4: Rabbit anti-beta-Catenin (Paired 280) (Cat#602-070)
5: Negative control.

REFERENCES

Park, C.S. *et al.* (2004) J. Biol. Chem. **279**:19592.

FOR RESEARCH USE ONLY.

AbboMax, Inc 1161 Ringwood Ct. Suite 100, San Jose, California 95131, USA
1 408-321-9898 (Tel). 1 408-321-9896 (Fax). 1-866-628-9898 www.abbomax.com info@abbomax.com