

# AbboMax, Inc

Innovation at Work

## Order Information

Description: Rabbit anti-CD136(pY1238)  
Catalogue#: 601-910  
Lot#: See the label  
Size: 100 ug/200 ul  
Host: Rabbit  
Clone: N/A  
Application: ELISA, WB, IHC  
Reactivity: Hu, Rt, Ms

## Rabbit anti CD136 Phospho-specific Antibody

Alternate Names:

Recepteur d'origine nantais (RON); Macrophage-Stimulating 1 Receptor (MST1R).

### ANTIGEN PREPARATION

A synthetic peptide corresponding to the human CD136 with a single phosphorylation site Tyr1238.

### BACKGROUND

CD136, a transmembrane receptor tyrosine kinase, also known as Macrophage stimulating 1 receptor (MST1R) and RON (Recepteur d'origine nantais), is a member of the MET proto-oncogene family (63% homology), and is the receptor for macrophage-stimulating protein (MSP), a multifunctional cytokine that regulates cell adhesion, motility, growth, and survival. Binding of MSP to CD136 stimulates tyrosine phosphorylation on Tyr 1238 and Tyr 1239. This phosphorylation leads to a up-regulation of CD136 catalytic activity and subsequent activation of downstream signaling molecules. In addition, CD136 contains putative autophosphorylation sites on Tyr 1353 and Tyr 1360. RON mediates multiple signaling cascades, such as MAPK, PI3K/AKT, FAK pathways. CD136 activation can also significantly increase C-Src activity. CD136 is a disulfide-linked 180kD heterodimer composed of a 35kD alpha chain and a 150kD beta chain, and is mainly expressed in cells of epithelial origin. CD136 is thought to play a role in early embryonic development and in the inflammatory response as well as implicated in the progression and metastasis of tumors including those of the breast and colon.

### PURIFICATION

The Rabbit IgG is purified by Site-specific Epitope Affinity Purification.

### SPECIFICITY

This antibody recognizes ~175 kDa of human LRP5 protein. It also reacts with mouse and rat. The other species are not tested.

### FORMULATION

This affinity purified antibody is supplied in sterile Tris-buffered saline (pH7.2) containing antibody stabilizer

### STORAGE

The antibodies are stable for 12 months from date of receipt when stored at  $-20^{\circ}\text{C}$  to  $-70^{\circ}\text{C}$ . The antibodies can be stored at  $2^{\circ}\text{C}$ - $8^{\circ}\text{C}$  for three month without detectable loss of activity. Avoid repeated freezing-thawing cycles.

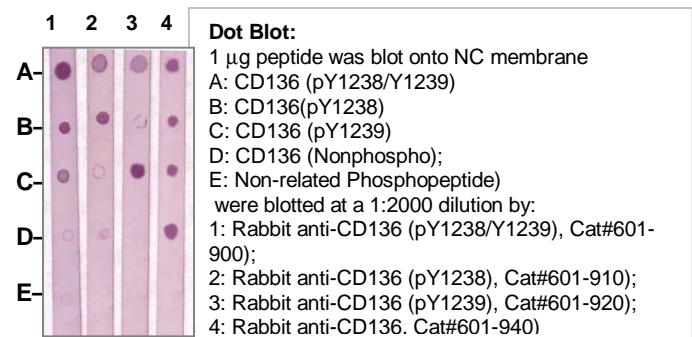
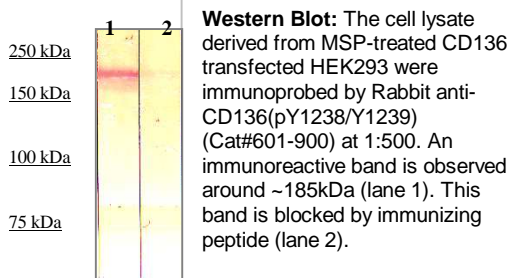
### APPLICATIONS/SUGGESTED WORKING DILUTIONS

Western Blot	0.1-1 $\mu\text{g}/\text{ml}$
ELISA	0.01-0.1 $\mu\text{g}/\text{ml}$
Immunoprecipitation	2-5 $\mu\text{g}/\text{ml}$
IHC	2-5 $\mu\text{g}/\text{ml}$
Flow cytometry	Not tested

<b>MOLECULAR WEIGHT:</b>	185 kDa
<b>POSITIVE CONTROL:</b>	CD136 transfected HEK293
<b>CELLULAR LOCATION:</b>	N/A

Optimal dilutions should be determined by researchers for the specific applications.

### DATA ATTACHMENTS



### REFERENCES

FOR RESEARCH USE ONLY.