

AbboMax, Inc

Innovation at Work

Rabbit anti p70S6K Polyclonal Antibody

Alternate Names: RPS6KB1, S6K kinase, Ribosomal protein S6K kinase, p70S6K

Order Information

Description: Rabbit anti p70S6K
Catalogue#: 601-310
Lot#: See the label
Size: 100 ug/200 ul
Host: Rabbit
Clone: N/A
Application: ELISA, WB, IHC
Reactivity: Hu, Rt, Ms, Ck, Bv, Dg

ANTIGEN PREPARATION

A synthetic peptide corresponding to the C-terminus of human p70S6K protein. This sequence is identical within human, rat, mouse, bovine, chicken and dog.

BACKGROUND

S6 kinase, or p70 S6 Kinase, a mitogen activated Ser/Thr protein kinase, is required for cell growth and G1 cell cycle progression. P70 S6 Kinase and single 4E-BP are phosphorylated via the insulin and target of rapamycin (TOR) signaling pathway which is independent of PI3K and AKT activity. On the other hand, the oncogenic transformation by P3k and Akt is dependent on targets that control translation: transforming activity, which is correlated with phosphorylation and activation of S6K and eliminated by the mTOR inhibitor rapamycin. S6K phosphorylates the S6 protein of the 40S ribosomal subunit.

PURIFICATION

The Rabbit IgG is purified by Epitope Affinity Purification.

SPECIFICITY

This antibody recognizes ~70 kDa of human p70S6K protein. This antibody also reacts with mouse and rat. The other species are not tested.

FORMULATION

This affinity purified antibody is supplied in sterile Phosphate-buffered saline (pH7.2) containing antibody stabilizer

STORAGE

The antibodies are stable for 12 months from date of receipt when stored at -20°C to -70°C. The antibodies can be stored at 2°C-8°C for three month without detectable loss of activity. Avoid repeated freezing-thawing cycles.

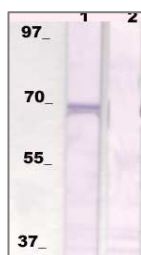
APPLICATIONS/SUGGESTED WORKING DILUTIONS

Western Blot	0.1-1 µg/ml
ELISA	0.01-0.1 µg/ml
Immunoprecipitation	2-5 µg/ml
IHC	Not tested µg/ml
Flow cytometry	Not tested

MOLECULAR WEIGHT:	70 kDa
POSITIVE CONTROL:	3T3 cells
CELLULAR LOCATION:	N/A

Optimal dilutions should be determined by researchers for the specific applications.

DATA ATTACHMENTS



WB: The cell lysate derived from 3T3 cells was immunoprobed by Rabbit anti-p70S6K (pS434) (Cat#601-030) at 1:500. An immunoreactive band is observed around ~70kDa (lane 1). This band is blocked by pre-incubation with immunizing peptide (Lane 2)

REFERENCES:

Mathieu Miron, et al. Signaling from Akt to FRAP/TOR Targets both 4E-BP and S6K in *Drosophila melanogaster*. (2003) Molecular and Cellular Biology, 23 (24), 9117-9126.

FOR RESEARCH USE ONLY.

AbboMax, Inc 1161 Ringwood Ct. Suite 100, San Jose, California 95131, USA
1 408-321-9898 (Tel). 1 408-321-9896 (Fax). 1-866-628-9898 www.abbomax.com info@abbomax.com