

AbboMax, Inc

Innovation at Work

Rabbit anti Phospho-P53 (pSer³⁷)

Alternate Names:

P53; Protein 53; Tumor protein 53

ANTIGEN PREPARATION

A synthetic peptide corresponding to the epitope –LPSPH- at a phosphorylation site at serine 37 of human p53 protein

BACKGROUND

P53, also known as protein 53, or tumor suppressor protein 53, plays important roles in cellular response to DNA damage and other genomic aberration. Mutations in the p53 tumor suppressor gene giving rise to mutant p53 proteins are among the most common genetic alterations associated with tumor cells. P53 protein is phosphorylated at multiple sites in vivo and in vitro in response to different stimuli. UV caused DNA damage can induce Ser9, Ser15, Ser20 phosphorylation while ATM, ATR, DNA-PK at Ser15 and Ser37.

PURIFICATION

The Rabbit IgG is purified by Site-specific Epitope Affinity Purification.

SPECIFICITY

This antibody recognizes ~53 kDa of human P53 protein. It does not recognize non-phosphorylated peptides. This antibody also reacts with mouse and rat. The other species are not tested.

APPLICATIONS/SUGGESTED WORKING DILUTIONS

Western Blot	0.1-1 µg/ml
ELISA	0.01-0.1 µg/ml
Immunoprecipitation	2-5 µg/ml
IHC	2-5 µg/ml
Flow cytometry	Not tested

FORMULATION

This affinity purified antibody is supplied in sterile Phosphate-buffered saline (pH7.2) containing antibody stabilizer

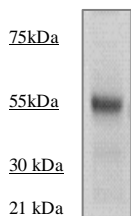
STORAGE

The antibodies are stable for 12 months from date of receipt when stored at –20°C to –70°C. The antibodies can be stored at 2°C-8°C for three month without detectable loss of activity. Avoid repeated freezing-thawing cycles.

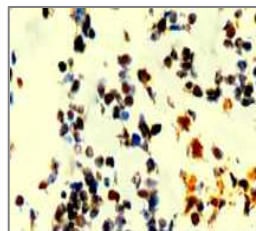
MOLECULAR WEIGHT:	53 kDa
POSITIVE CONTROL:	UV treated Hela cells
CELLULAR LOCATION:	Nuclear

Optimal dilutions should be determined by researchers for the specific applications.

DATA ATTACHMENTS



WB: The cell lysate derived from UV stimulated Hela cells was immunoprobed by Rabbit anti-p53 (pS37) (Cat#601-260) at 1:500. An immunoreactive band is observed around ~53kDa



IHC: UV treated Hela cells cultured in the cell chamber, fixed, and immunoprobed by Rabbit Anti-p53 (pS37) antibody, (Cat# 601-260) at 1:100 for 10 min @ RT.

REFERENCES:

Sylvie Labrecque, et al. Analysis of the Anti-p53 Antibody Response in Cancer Patients (1993) *Cancer Research* 53, 3468-3471

FOR RESEARCH USE ONLY.

AbboMax, Inc 1161 Ringwood Ct. Suite 100, San Jose, California 95131, USA
1 408-321-9898 (Tel). 1 408-321-9896 (Fax). 1-866-628-9898 www.abbomax.com info@abbomax.com

Order Information

Description: Rabbit anti P53 (pS37)
Catalogue#: 601-260
Lot#: See the label
Size: 100 µg/200 ul
Host: Rabbit
Clone: N/A
Application: ELISA, WB, IHC
Reactivity: Hu, Rt, Ms