

AbboMax, Inc

Innovation at Work

Rabbit anti-Phospho- pTEN (pSer³⁸⁵) Synonym: Phosphatase and Tensin homolog (PTEN); MMAC1

ANTIGEN PREPARATION

A synthetic peptide surrounding to the epitope -DTSDP-- with phosphorylation sites at Ser385 of PTEN protein from human, mouse and rat origins.

BACKGROUND

The phosphatase and tensin homologue (PTEN) tumor suppressor is a phosphatidylinositol D3-phosphatase that is frequently mutated in tumor cells. PTEN is itself regulated by phosphorylation on multiple serine and threonine residues in its C terminus. Casein kinase 2 (CK2) and Glycogen synthase kinase 3 β (GSK3 β), ATK/PI3K are involved in PTEN phosphorylation at sites of S370, S380, T382, T383, S385. The PTEN phosphorylation may play critical roles in the tumor suppressor functions.

PURIFICATION

The Rabbit IgG is purified by site-modified Epitope Affinity Purification.

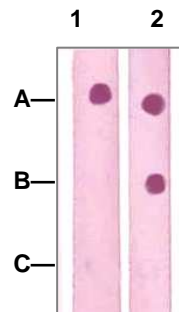
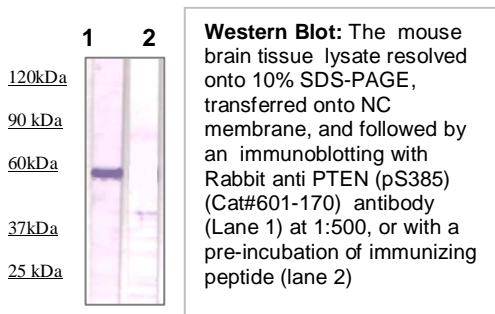
SPECIFICITY

This antibody recognizes PTEN (pS385) with a phosphorylated site at Serine 385. It does not cross-react with non-phosphospecific peptide.

APPLICATIONS/SUGGESTED WORKING DILUTIONS

Western Blot	0.1-1 μ g/ml
ELISA	0.01-0.1 μ g/ml
Immunoprecipitation	2-5 μ g/ml
IHC	1:200
Flow cytometry	Not tested

DATA ATTACHMENTS



REFERENCES

Anna Maria Ai et al. Cooperative Phosphorylation of the Tumor Suppressor Phosphatase and Tensin Homologue (PTEN) by Casein Kinases and Glycogen Synthase Kinase 3 β . J. Biol. Chem., Vol. 280, Issue 42, 35195-35202, October 21, 2005.

FOR RESEARCH USE ONLY.

AbboMax, Inc 1161 Ringwood Ct. Suite 100, San Jose, California 95131, USA
1 408-321-9898 (Tel). 1 408-321-9896 (Fax). 1-866-628-9898 www.abbomax.com info@abbomax.com

Order Information

Description: Rabbit anti Phospho-PTEN(pS385)
Catalogue#: 601-170
Lot#: See the label
Size: 100 μ g/200 μ l
Host: Rabbit
Clone: N/A
Application: ELISA, WB, IHC
Reactivity: Hu, Rt, Ms, Bv, Ck,