

AbboMax, Inc

Innovation at Work

Rabbit anti LRP6 Phospho-specific Antibody

Alternate Names:

Low-density lipoprotein Receptor-related Protein 6 (LRP6)

ANTIGEN PREPARATION

A synthetic peptide corresponding to the epitope KGTYF at a phosphorylation threonine1479 in LRP6 protein

BACKGROUND

Low-density lipoprotein receptor (LDLR)-related protein 6 (LRP6) is a member of the LDLR family which consists of cell surface proteins involved in receptor-mediated endocytosis of specific ligands. LRP5 causes several human diseases including bone mineral density variability¹, endosteal hyperostosis, autosomal dominant osteopetrosis type I etc. The V171 mutation in LRP5 causes high bone density by impairing the action of a normal antagonist of the Wnt pathway and thus increasing Wnt signaling. The activity of LRP5 and LRP6 can be inhibited by binding of some members of Dickkopf (DKK) family proteins. Upon stimulation with Wnt, LRP5 and LRP6 are phosphorylated at multiple sites including Thr 1479, Ser 1490 and Thr 1492 by kinases such as GSK-3 and CK1.

PURIFICATION

The Rabbit IgG is purified by Site-specific Epitope Affinity Purification.

SPECIFICITY

This antibody recognizes ~180 kDa of human LRP6 protein. It also reacts with mouse and rat. The other species are not tested.

APPLICATIONS/SUGGESTED WORKING DILUTIONS

Western Blot	0.1-1 µg/ml
ELISA	0.01-0.1 µg/ml
Immunoprecipitation	2-5 µg/ml
IHC	Not tested
Flow cytometry	Not tested

FORMULATION

This affinity purified antibody is supplied in sterile Phosphate-buffered saline (pH7.2) containing antibody stabilizer

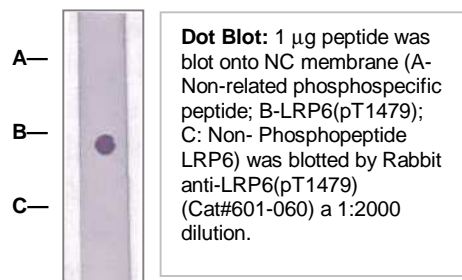
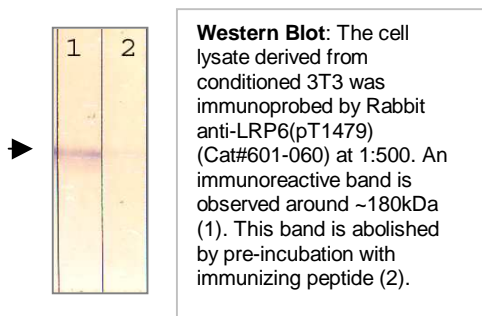
STORAGE

The antibodies are stable for 12 months from date of receipt when stored at -20°C to -70°C. The antibodies can be stored at 2°C-8°C for three month without detectable loss of activity. Avoid repeated freezing-thawing cycles.

MOLECULAR WEIGHT:	180 kDa
POSITIVE CONTROL:	Conditioned 3T3 cell lysate
CELLULAR LOCATION:	N/A

Optimal dilutions should be determined by researchers for the specific applications.

DATA ATTACHMENTS



REFERENCES:

Zahid Khan et al. (2007), Molecular and Cellular Biology, 27(20), 7291-7301.

FOR RESEARCH USE ONLY.

Order Information

Description: Rabbit anti LRP6 (pT1479)
Catalogue#: 601-060
Lot#: See the label
Size: 100 µg/200 ul
Host: Rabbit
Clone: N/A
Application: ELISA, WB, IHC
Reactivity: Hu, Rt, Ms, Bv, Cn