

AbboMax, Inc

Innovation at Work

Rabbit anti CD156b/ADAM17 Polyclonal Antibody

Alternate Names: ADAM17 (A disintegrin and metalloproteinase domain 17), CD156b antigen; TACE (TNF-alpha-converting enzyme), Snake venom-like protease.

Order Information

Description: Rabbit anti-CD156b (NT)
Catalogue#: 600-870
Lot#: See the label
Size: 100 ug/200 ul
Host: Rabbit
Clone: N/A
Application: ELISA, WB, IHC
Reactivity: Hu, Rt, Ms.

ANTIGEN PREPARATION

A synthetic peptide corresponding to the human CD156b at extracellular domain. This sequence is identical among human, mouse or rat origins.

BACKGROUND

CD156b is a type I transmembrane glycoprotein belong to the ADAM (a disintegrin and metalloprotease domain) family. This single-pass type-1 824 aa transmembrane glycoprotein contains a signal sequence, an extracellular domain (pro-domain, catalytic domain, disintegrin-cysteine-rich domain, glycosylation sites), transmembrane and cytoplasmic domain. CD156b is a multi-domain protein that includes a Zn-dependent protease domain in the extracellular portion. It releases the soluble forms of TNF and TGF α from cells. CD156b is identified by its ability to cleave the transmembrane form of TNF between Ala-76 and Val-77 to generate the soluble form. CD156b is therefore a prospective therapeutic target in human cancer. CD156b is expressed on T cells, neutrophils, endothelial cells, monocytes, dendritic cells, macrophages, polymorphonuclear leukocytes and myocytes. And non-lymphoid tissues including heart, placenta, brain, muscle.

PURIFICATION

The Rabbit IgG is purified by Site-specific Epitope Affinity Purification.

FORMULATION

This affinity purified antibody is supplied in sterile Tris-buffered saline (pH7.2) containing antibody stabilizer

SPECIFICITY

This antibody recognizes ~100 kDa of human CD156b. It also reacts with mouse and rat. The other species are not tested.

STORAGE

The antibodies are stable for 12 months from date of receipt when stored at -20°C to -70°C. The antibodies can be stored at 2°C-8°C for three month without detectable loss of activity. Avoid repeated freezing-thawing cycles.

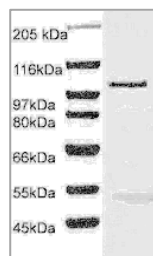
APPLICATIONS/SUGGESTED WORKING DILUTIONS

Western Blot	0.1-1 μ g/ml
ELISA	0.01-0.1 μ g/ml
Immunoprecipitation	2-5 μ g/ml
IHC	2-5 μ g/ml
Flow cytometry	Not tested

MOLECULAR WEIGHT:	~100 kDa
POSITIVE CONTROL:	Jurkat Cells
CELLULAR LOCATION:	Membrane

Optimal dilutions should be determined by researchers for the specific applications.

DATA ATTACHMENTS



Western Blot: The cell lysate derived from Jurkat was immunoprobed by Rabbit anti-CD156b (Cat#600-870) at 1:500. An immunoreactive band is observed around ~100 kDa

REFERENCES

Goetz, P., et al. ADAM-17 regulates endothelial cell morphology, proliferation, and in vitro angiogenesis Biochem. Biophys. Res. Commun. 380 (1), 33-38 (2009).

FOR RESEARCH USE ONLY.

AbboMax, Inc 1161 Ringwood Ct. Suite 100, San Jose, California 95131, USA
1 408-321-9898 (Tel). 1 408-321-9896 (Fax). 1-866-628-9898 www.abbomax.com info@abbomax.com