

AbboMax, Inc

Innovation at Work

Rabbit anti-Casein kappa Polyclonal Antibody

Synonym: Casein; Casein Kappa; Csnk; CSN10; CSN3.

Order Information

Description: Rabbit anti-Csnk
Catalogue#: 600-830
Lot#: See the label
Size: 100 ug/200 ul
Host: Rabbit
Clone: N/A
Application: ELISA, WB,
Reactivity: Ms

ANTIGEN PREPARATION

A synthetic peptide corresponding to the N-terminus of mouse Casein protein.

BACKGROUND

Casein is the predominant phosphoprotein which has no disulphide bridges but rich in proline. It is found in fresh milk, as a salt of calcium. Casein is not coagulated by heat. It is precipitated by acids and by rennet, a proteolytic enzyme typically obtained from the stomachs of calves. The enzyme trypsin can hydrolyze off a phosphate-containing peptone. This protein is synthesized by mammary epithelium only in the presence of lactogenic hormone combination of insulin, hydrocortisone, and prolactin. Enhancement of the rate of secretion of newly-synthesised caseins occurs when mammary explants are challenged in vitro with agents that activate protein kinase A (PKA). The PKA-sensitive step(s) in casein secretion is early in the exocytosis pathway but inhibition of PKA does not impair casein maturation. PKA is located on membranes of vesicles situated in the Golgi region. Casein positive cells are present in all breast carcinomas with a variable distribution and degree of staining. Casein serves as an in vitro marker of terminally differentiated breast luminal epithelial cells.

PURIFICATION

The Rabbit IgG is purified by Epitope Affinity Purification.

SPECIFICITY

This antibody recognizes ~21 kDa of mouse Casein protein. The other species are not tested.

FORMULATION

This affinity purified antibody is supplied in sterile phosphate-buffered saline (pH7.2) containing antibody stabilizer

STORAGE

The antibodies are stable for 12 months from date of receipt when stored at -20°C to -70°C. The antibodies can be stored at 2°C-8°C for three month without detectable loss of activity. Avoid repeated freezing-thawing cycles.

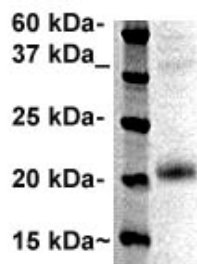
APPLICATIONS/SUGGESTED WORKING DILUTIONS

Western Blot	0.1-1 µg/ml
ELISA	0.01-0.1 µg/ml
Immunoprecipitation	2-5 µg/ml
IHC	Not tested
Flow cytometry	Not tested

MOLECULAR WEIGHT:	~21 kDa
POSITIVE CONTROL:	Mouse mammary gland
CELLULAR LOCATION:	Cytoplasmic

Optimal dilutions should be determined by researchers for the specific applications.

DATA ATTACHMENTS



Western Blot: The whole cell lysate derived from mouse mammary gland was separated in 12% SDS-PAGE, transferred onto NC membrane, and immunoblotted by Rabbit anti -Csnk (Cat#600-830) antibody at 1:500. An immunoreactive band around ~21 kDa was observed.

REFERENCES

P. Chandra Shekar et al. κ-Casein-deficient mice fail to lactate. PNAS 2006 May 23, 103 (21): 8000-8005.

FOR RESEARCH USE ONLY.

AbboMax, Inc 1161 Ringwood Ct. Suite 100, San Jose, California 95131, USA
1 408-321-9898 (Tel). 1 408-321-9896 (Fax). 1-866-628-9898 www.abbomax.com info@abbomax.com