

# AbboMax, Inc

Innovation at Work

## Rabbit anti-EWSR1 Polyclonal Antibody

Synonym: Ewing sarcoma breakpoint region 1, EWS, EWSR1, EWSR-1.

### Order Information

Description: Rabbit anti-EWSR1  
Catalogue#: 600-820  
Lot#: See the label  
Size: 100 ug/200 ul  
Host: Rabbit  
Clone: N/A  
Application: ELISA, WB, IHC,  
Reactivity: Hu, Rt, Ms, Dg

### ANTIGEN PREPARATION

A synthetic peptide corresponding to the internal segment of EWSR1 protein. This sequence is identical among human, rat, mouse and dog species.

### BACKGROUND

The *EWSR1* gene encodes a putative RNA binding protein. Mutation in this gene causes Ewing sarcoma and neuroectodermal and various other tumors. This gene is involved in a number of different sarcomas as a result of chromosomal translocations. EWSR1 is fused to an ETS transcription factor (FLI-1, ERG, ETV-1, E1AF or FEV) in Ewing sarcoma; to activating transcription factor-1 (ATF-1) in soft tissue clear cell sarcoma; to Wilms Tumor -1 (WT1) in desmoplastic small round cell; to nuclear receptor 4A3 (NR4A3) in extraskeletal myxoid chondrosarcoma, and to C/EBP-homologous protein (CHOP) in myxoid liposarcoma. EWSR1 genes are required for mitotic integrity and survival of neural cells in the early embryonic development, and that the involvement of EWSR1 in mitotic stability is conserved from zebrafish to human.

### PURIFICATION

The Rabbit IgG is purified by Epitope Affinity Purification.

### SPECIFICITY

This antibody recognizes ~70 kDa of EWSR1 protein. It also cross reacts with human, mouse and rat tissues. The other species are not tested.

### FORMULATION

This affinity purified antibody is supplied in sterile phosphate-buffered saline (pH7.2) containing antibody stabilizer

### STORAGE

The antibodies are stable for 12 months from date of receipt when stored at -20°C to -70°C. The antibodies can be stored at 2°C-8°C for three month without detectable loss of activity. Avoid repeated freezing-thawing cycles.

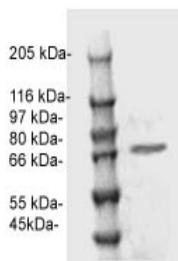
### APPLICATIONS/SUGGESTED WORKING DILUTIONS

Western Blot	0.1-1 µg/ml
ELISA	0.01-0.1 µg/ml
Immunoprecipitation	2-5 µg/ml
IHC	Not tested
Flow cytometry	Not tested

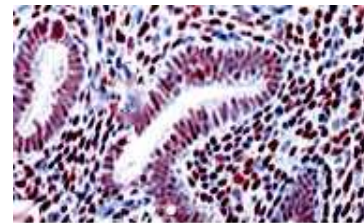
<b>MOLECULAR WEIGHT:</b>	~70 kDa
<b>POSITIVE CONTROL:</b>	Mouse brain tissue
<b>CELLULAR LOCATION:</b>	Nuclear

Optimal dilutions should be determined by researchers for the specific applications.

### DATA ATTACHMENTS



**Western Blot:** The whole cell lysate derived from mouse brain tissue was separated in 10% SDS-PAGE, transferred onto NC membrane, and immunoblotted by Rabbit anti-EWSR1 (Cat#600-820) antibody at 1:500. An immunoreactive band around ~70 kDa was observed.



**IHC:** Human uterus tissue stained with Anti-EWSR1 antibody (Cat# 600-820) at 1:200 for 10 min @ RT. Staining of formalin-fixed tissue requires boiling tissue sections in 10 mM Citrate Buffer, pH 6.0 for 10 min followed by cooling at RT for 20 min.

### REFERENCES

Melot, T., et al. Characterization of a new brain-specific isoform of the EWS oncoprotein. Eur. J. Biochem. 268 (12), 3483-3489 (2001)

**FOR RESEARCH USE ONLY.**

AbboMax, Inc 1161 Ringwood Ct. Suite 100, San Jose, California 95131, USA  
1 408-321-9898 (Tel). 1 408-321-9896 (Fax). 1-866-628-9898 www.abbomax.com info@abbomax.com