

# AbboMax, Inc

Innovation at Work

## Order Information

Description: Rabbit anti-Plectin  
Catalogue#: 600-770  
Lot#: See the label  
Size: 100 ug/200 ul  
Host: Rabbit  
Clone: N/A  
Application: ELISA, WB,  
Reactivity: Hu, Rt, Ms

## Rabbit anti-Plectin Polyclonal Antibody

Synonym: Plectin; PLTN; PLEC1; intermediate filament binding protein 500kDa."

### ANTIGEN PREPARATION

A synthetic peptide corresponding to the C-term portion of human Plectin. This sequence is identical to rat, mouse and human origins.

### BACKGROUND

Plectin is a cytoskeleton linker protein expressed in a variety of tissues including skin, muscle, and nerves. Plectin can bind to several molecules (intermediate filaments) that make up the cytoskeleton. Mutations in its gene are associated with epidermolysis bullosa simplex with late-onset muscular dystrophy. In certain skin cells, this protein is an essential part of hemidesmosomes, which attach the network of intermediate filaments to the cell membrane. It is also a component of desmosomes, which form junctions between neighboring cells. As part of these structures, plectin plays a critical role in anchoring the outer layer of the skin (the epidermis) to underlying layers. Mutations in the PLEC1 gene also cause at least two other forms of epidermolysis bullosa

### PURIFICATION

The Rabbit IgG is purified by Epitope Affinity Purification.

### SPECIFICITY

This antibody recognizes ~500 kDa of Plectin protein. It reacts with human, mouse and rat. The other species are not tested.

### FORMULATION

This affinity purified antibody is supplied in sterile phosphate-buffered saline (pH7.2) containing antibody stabilizer

### STORAGE

The antibodies are stable for 12 months from date of receipt when stored at -20°C to -70°C. The antibodies can be stored at 2°C-8°C for three month without detectable loss of activity. Avoid repeated freezing-thawing cycles.

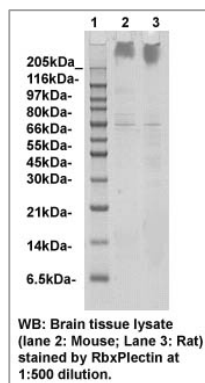
### APPLICATIONS/SUGGESTED WORKING DILUTIONS

|                     |                |
|---------------------|----------------|
| Western Blot        | 0.1-1 µg/ml    |
| ELISA               | 0.01-0.1 µg/ml |
| Immunoprecipitation | 2-5 µg/ml      |
| IHC                 | 0.5-2 µg/ml    |
| Flow cytometry      | Not tested     |

|                           |              |
|---------------------------|--------------|
| <b>MOLECULAR WEIGHT:</b>  | ~500 kDa     |
| <b>POSITIVE CONTROL:</b>  | Brain tissue |
| <b>CELLULAR LOCATION:</b> | Cytoplasmic  |

Optimal dilutions should be determined by researchers for the specific applications.

### DATA ATTACHMENTS



### REFERENCES

Johann W. Bauer et al. A Compound Heterozygous One Amino-Acid Insertion/Nonsense Mutation in the Plectin Gene Causes Epidermolysis Bullosa Simplex with Plectin Deficiency. Am J Pathol. 2001 February; 158(2): 617-625.

**FOR RESEARCH USE ONLY.**

AbboMax, Inc 1161 Ringwood Ct. Suite 100, San Jose, California 95131, USA  
1 408-321-9898 (Tel). 1 408-321-9896 (Fax). 1-866-628-9898 www.abbomax.com info@abbomax.com