

AbboMax, Inc

Innovation at Work

Rabbit anti PSA Polyclonal Antibody

Alternate Names: Prostate Specific Antigen (PSA); Kallikrein 3 (KLK3)
APS; hK3; KLK2A1;

Order Information

Description: Rabbit anti-PSA
Catalogue#: 600-700
Lot#: See the label
Size: 100 ug/200 ul
Host: Rabbit
Clone: N/A
Application: ELISA, WB, IHC
Reactivity: Hu.

ANTIGEN PREPARATION

A synthetic peptide corresponding to internal sequence of human PSA protein.

BACKGROUND

Prostate specific antigen (PSA), also called kallikrein-3, is a chymotrypsin-like serine protease exclusively produced by the prostate epithelium, and abundant in seminal fluid. The PSA is an established tumor marker that aids in the diagnosis, staging and follow up of prostate cancer. PSA can be detected in the sera of patients with prostatic carcinoma.

PURIFICATION

The Rabbit IgG is purified by Epitope-Affinity Purification.

FORMULATION

This affinity purified antibody is supplied in sterile Phosphate buffered saline (pH7.2) containing antibody stabilizer

SPECIFICITY

This antibody recognizes ~27 kDa of human PSA protein. The other species are not tested.

STORAGE

The antibodies are stable for 12 months from date of receipt when stored at -20°C to -70°C . The antibodies can be stored at 2°C - 8°C for three month without detectable loss of activity. Avoid repeated freezing-thawing cycles.

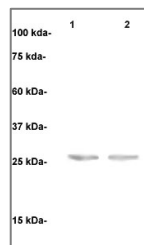
APPLICATIONS/SUGGESTED WORKING DILUTIONS

Western Blot	0.1-1 $\mu\text{g}/\text{ml}$
ELISA	0.01-0.1 $\mu\text{g}/\text{ml}$
Immunoprecipitation	2-5 $\mu\text{g}/\text{ml}$
IHC	2-5 $\mu\text{g}/\text{ml}$
Flow cytometry	Not tested

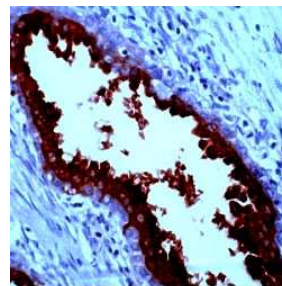
MOLECULAR WEIGHT:	~27 kDa
POSITIVE CONTROL:	LNCaP cell lysate
CELLULAR LOCATION:	Cytoplasmic

Optimal dilutions should be determined by researchers for the specific applications.

DATA ATTACHMENTS



Western Blot: The whole cell lysates derived from LNCaP (lane 1) and HEK293 (lane 2) were immunoblotted by Rabbit anti-PSA (Cat#600-700) at 1:1000 .



IHC: Human Prostate Tissue is stained by Rabbit anti PSA (Cat#600-700) at 1:200 (RT, 10 min). Staining of formalin-fixed tissue requires boiling tissue sections in 10 mM Citrate Buffer, pH 6.0 for 10 min followed by cooling at RT for 20 min.

REFERENCES

Weiner GJ, et al. Prostate cell surface antigen-specific antibodies. US Patent 6,207,805 dated Mar 27 2001
Rokhlin OW, et al. a prostate-specific surface-reactive monoclonal antibody. Cancer Lett. 131: 129-136, 1998.

FOR RESEARCH USE ONLY.

AbboMax, Inc 1161 Ringwood Ct. Suite 100, San Jose, California 95131, USA
1 408-321-9898 (Tel). 1 408-321-9896 (Fax). 1-866-628-9898 www.abbomax.com info@abbomax.com